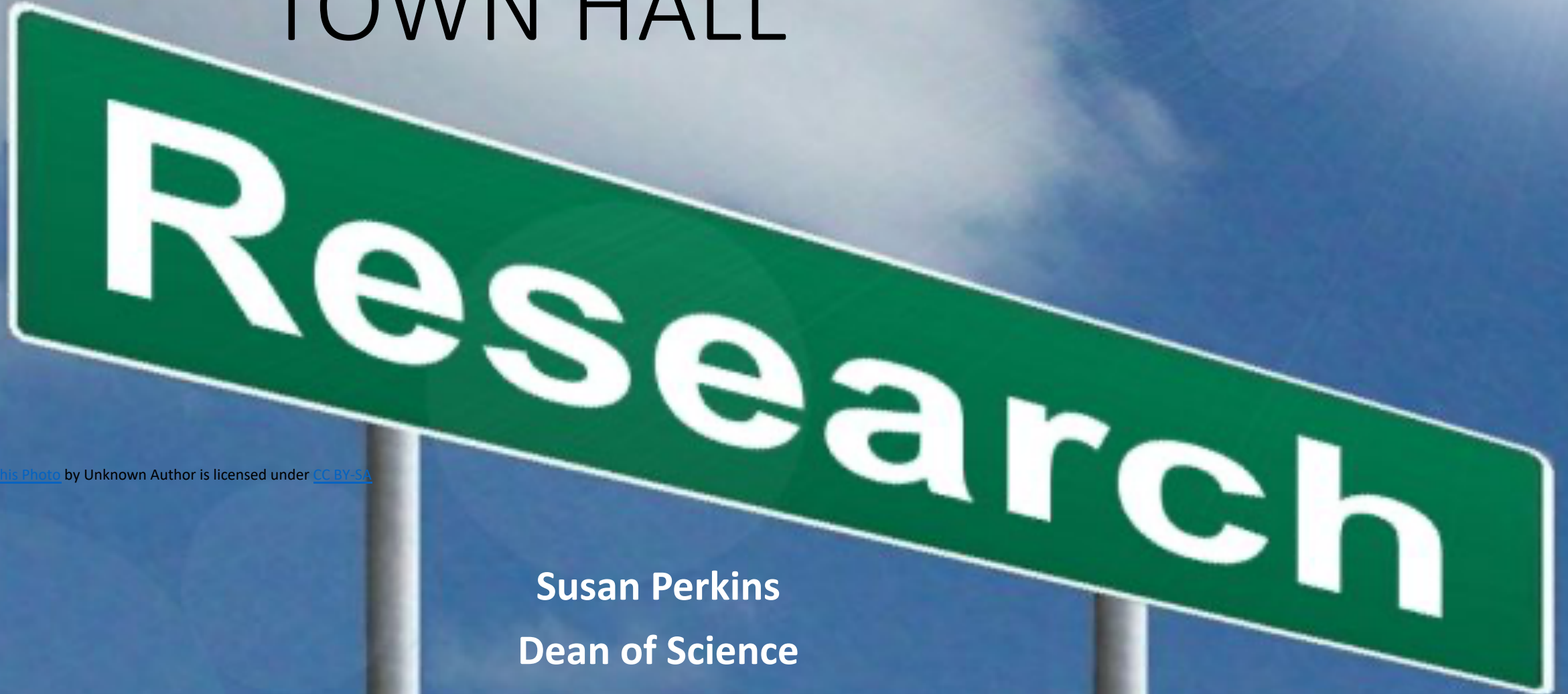


Reopening Research TOWN HALL



[This Photo](#) by Unknown Author is licensed under [CC BY-SA](#)

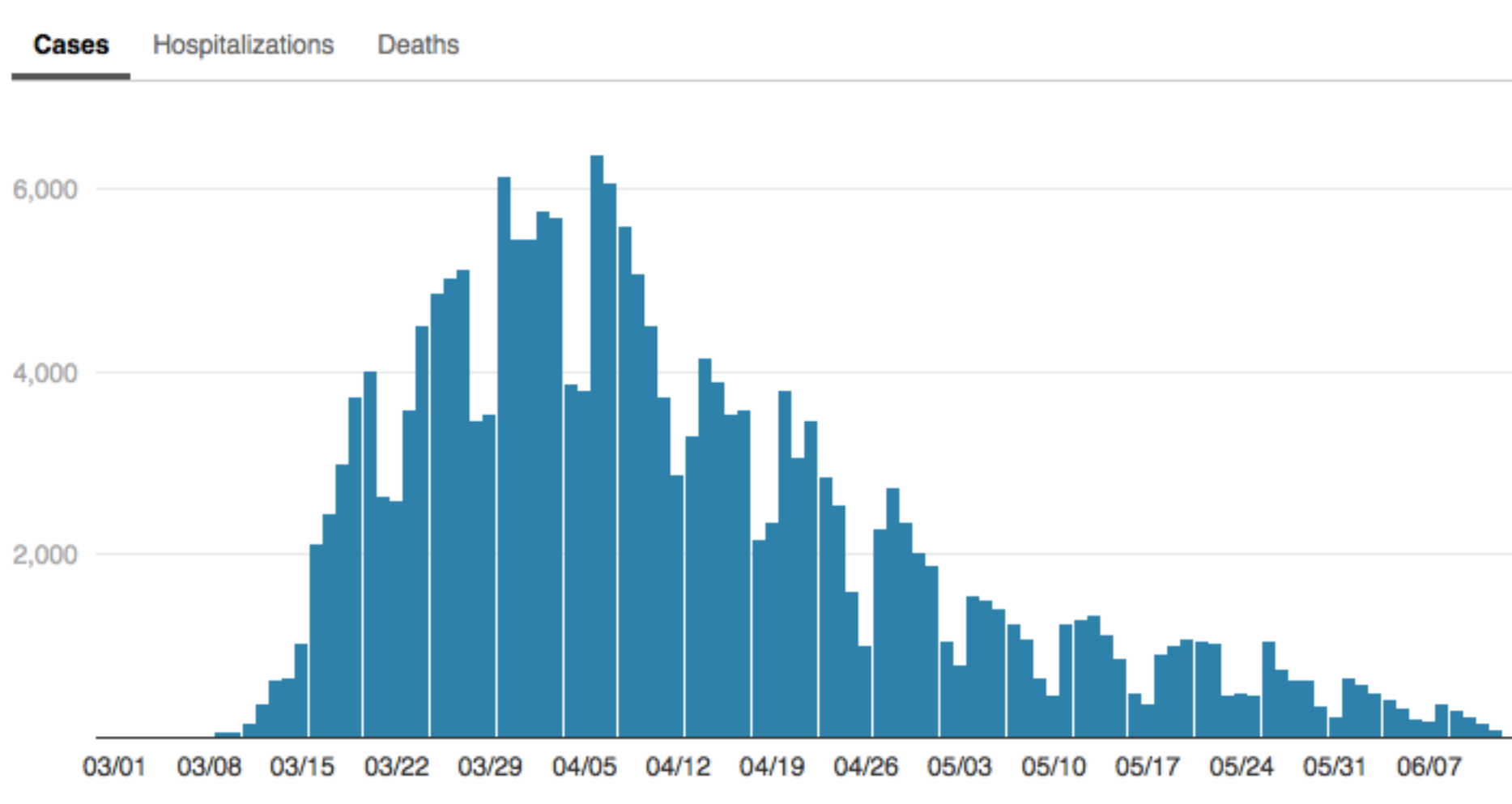
Susan Perkins
Dean of Science
June 18 & 19, 2020

NYC COVID-19 Cases, Hospitalizations and Deaths

Cases	207,821
Hospitalizations	54,170
Confirmed deaths* Deaths following a positive COVID-19 laboratory test	17,487
Probable deaths Cause of death reported as "COVID-19" or equivalent, but no positive laboratory test	4,684
Updated:	June 17, at 1:15 p.m.

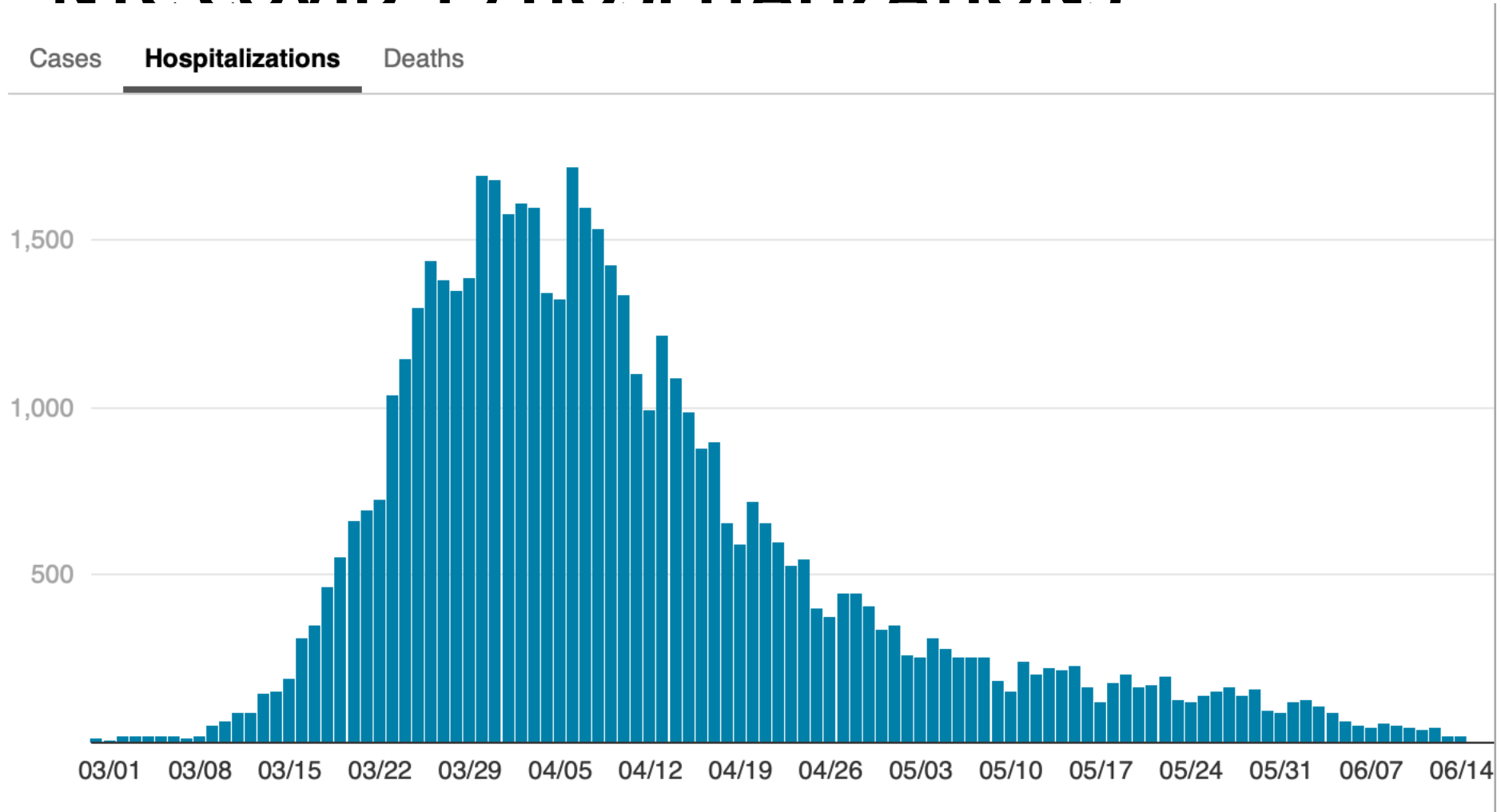
SOURCE: <https://www1.nyc.gov/site/doh/covid/covid-19-data.page>

NYC COVID-19 CASES



SOURCE: <https://www1.nyc.gov/site/doh/covid/covid-19-data.page>

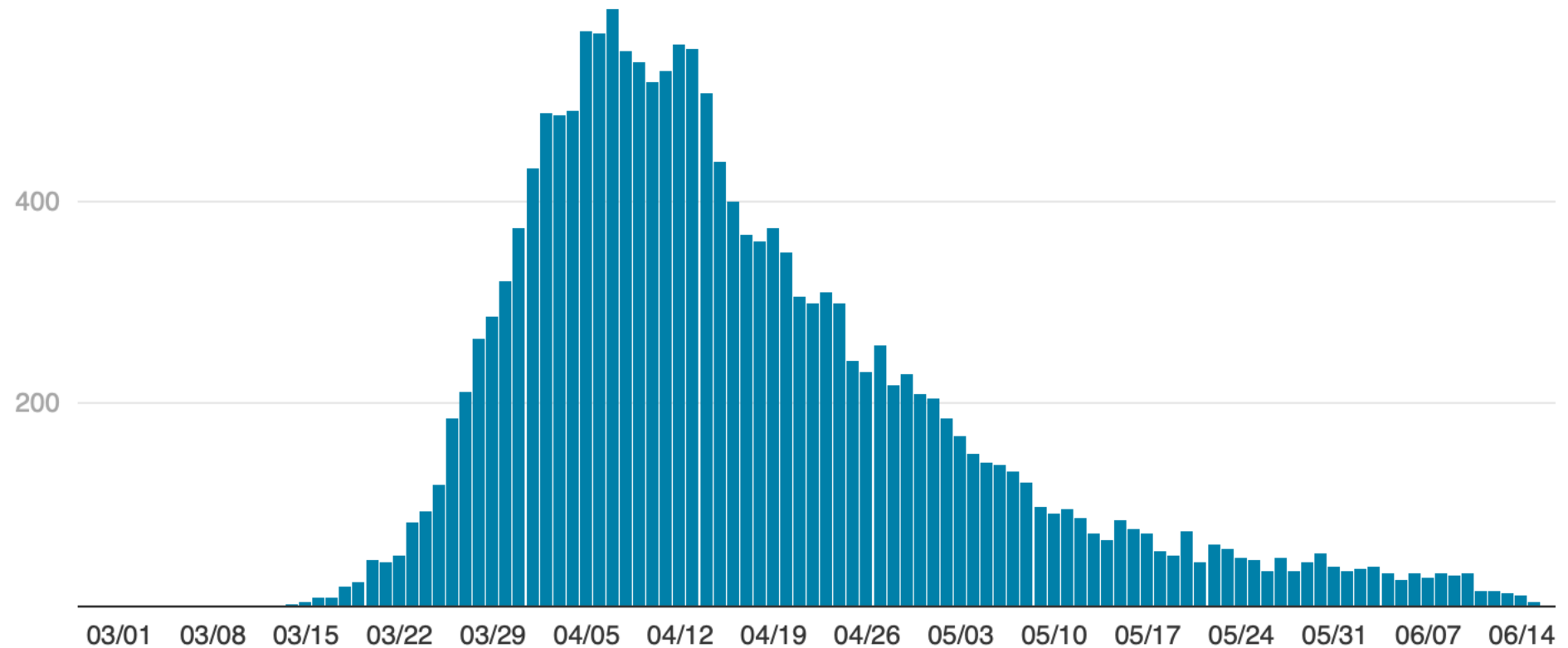
NYC COVID-19 HOSPITALIZATIONS



SOURCE: <https://www1.nyc.gov/site/doh/covid/covid-19-data.page>

NYC COVID-19 DEATHS

Cases Hospitalizations **Deaths**

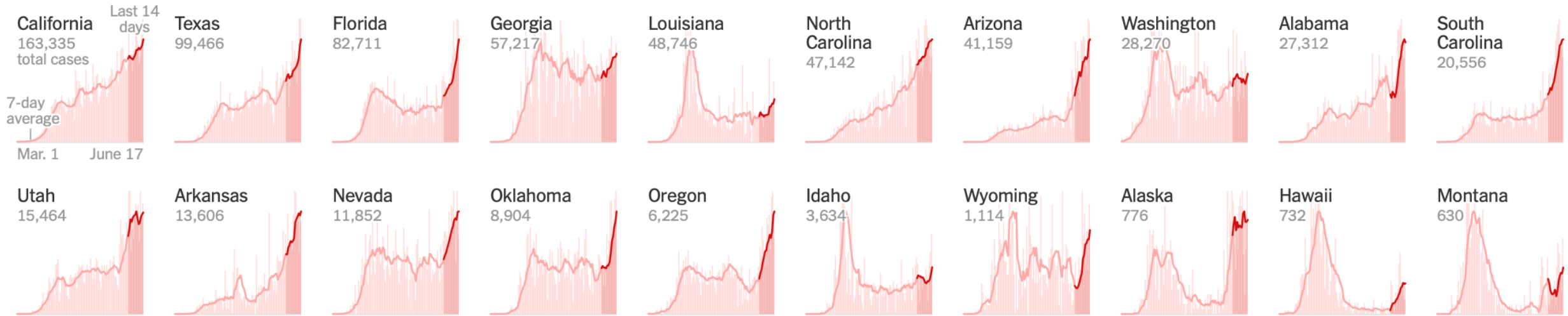


SOURCE: <https://www1.nyc.gov/site/doh/covid/covid-19-data.page>

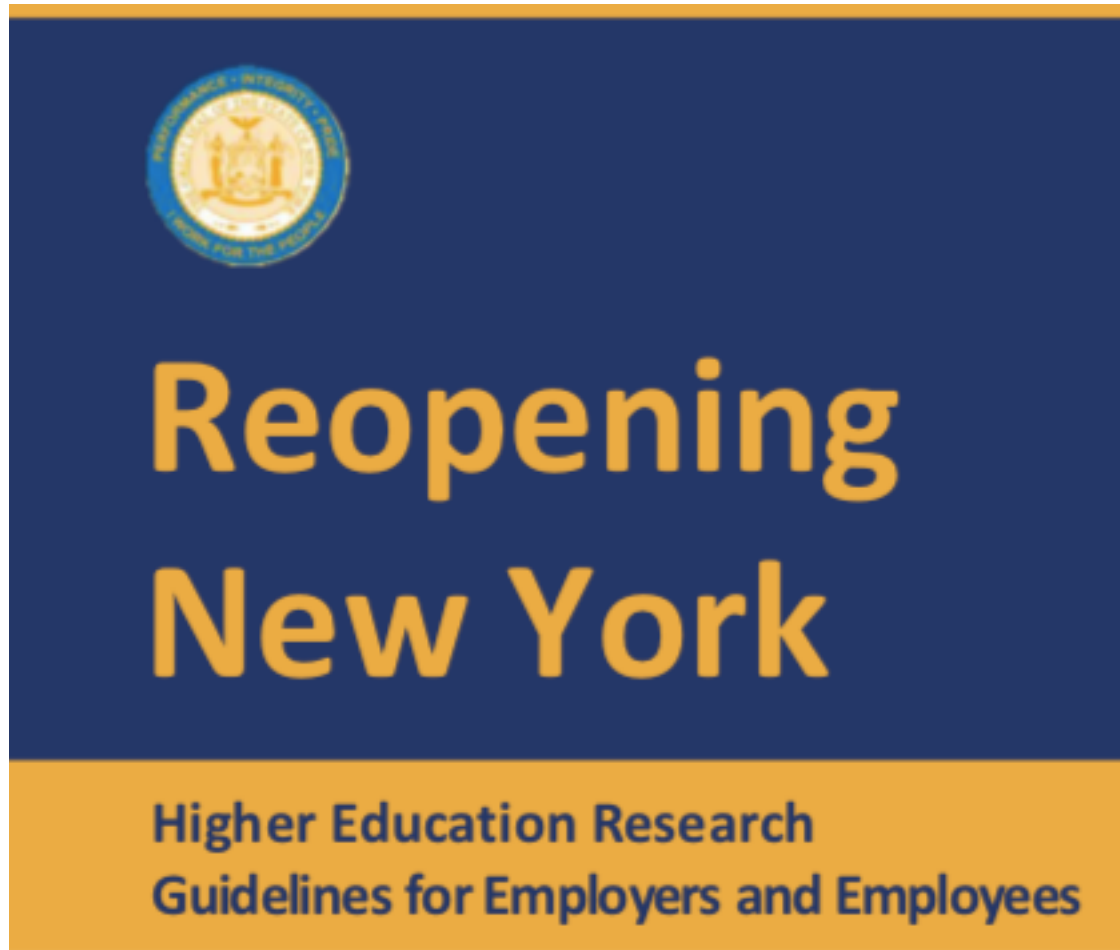
Reopening Must Be Performed Correctly

Confirmed New COVID-19 Cases

(as of 6/18/20 11:43 am)



NYC Current Reopening Status



- As of June 8, 2020 NYC Entered Phase 1
- Higher Education Research Included (as of June 8, 2020)
- Mandatory Guidelines for Employers and Employees
 - Physical Distancing
 - Protective Equipment
 - Hygiene, Cleaning and Disinfection
 - Communication
 - Screening

More information: <https://forward.ny.gov/phase-one-industries>

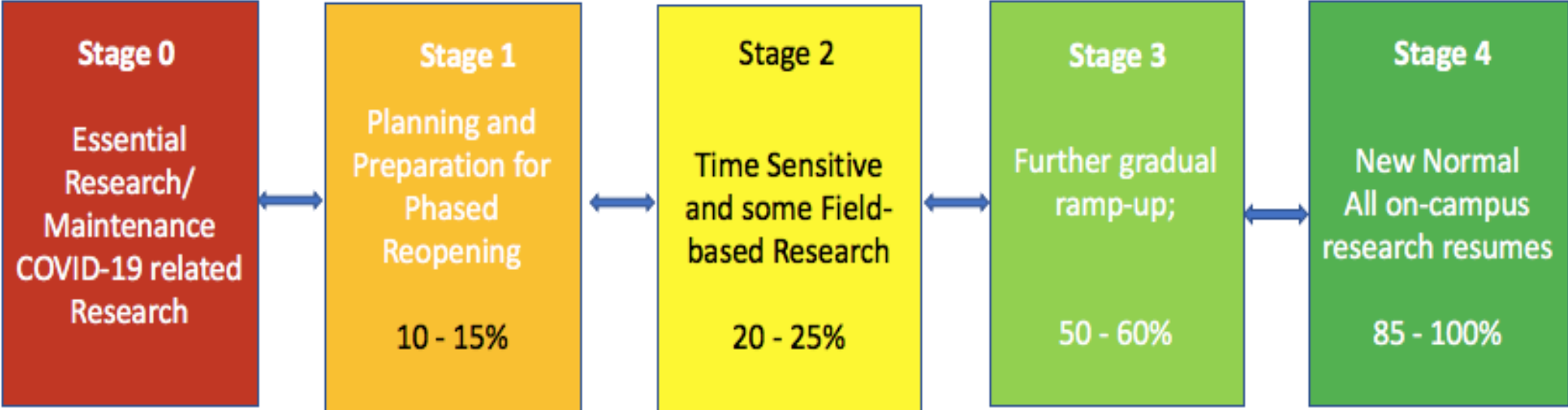
CCNY PHASING OF RESEARCH



- **CUNY agrees to de-couple campus return for research from In-person classroom instruction**
- **Gradual, phased approach**
- **Must be completed "safely"**
 - **Masks**
 - **Social distancing**
 - **Up-to-date C14 Certification**
 - **Etc.**
- **Working in Conjunction with CUNY, ASRC, GSOE, CSOM, Science**
- **Developing Overall Plans for CUNY, CCNY and buildings**

Planning for the Future

Phasing In Research



Work from home whenever possible

STATE and CCNY PHASES/ STAGES OF REOPENING

- STATE PHASES AND CCNY STAGES ARE NOT LINKED, I.E. CCNY MAY ENTER STAGE 2 OR EVEN STAGE 3 WHILE NYC MAY BE IN PHASE 1
- CCNY WILL MONITOR STAGES AND COULD MOVE FORWARD OR BACKWARDS
- IF NYC REGRESSES THEN CCNY WILL NOT LIKELY PROGRESS

Phasing In Research

CURRENTLY - STAGE 1

Stage 1

Planning and
Preparation for
Phased Reopening

- Equipment Preparation
- Plans for additional Personnel on site
- Obtaining Approvals to Conduct On-site Research

Phasing In Research

Suggested Research Prioritization

Stage 2

**Time Sensitive and
some Field-based
Research**

20-25%

- Disruption of effort/data collection causes catastrophic data loss or delays
- Seasonal data collection, field/agricultural work
- Long-term longitudinal studies
- Animal experiments where delay would result in euthanasia or colony loss

GSOE Phasing In Research

Suggested Research Prioritization

Stage 2

**Time Sensitive and
some Field-based
Research**

20-25%

- Graduate Students and Post-docs close to completion requiring on-campus/on-site access
- Externally funded, deadline-driven research requiring stipulated deliverables (grant/contract deadlines)
- Externally funded research with no ability to pay salaries/stipends for no-work
- Untenured faculty research

CCNY Phasing In Research Proposed Stages 1-2 Process

**Reopening
New York**

Higher Education Research
Guidelines for Employers and Employees

These guidelines apply to all higher education research facilities that have been permitted to **reopen**, as well as research activities statewide that were previously permitted to operate as essential. See "Interim COVID-19 Guidance for Higher Education Research" for full details.

During the COVID-19 public health emergency, all managers/operators of higher education research facilities should stay up to date with any changes to state and federal requirements related to higher education research activities and incorporate those changes into their operations. This guidance is not intended to replace any existing applicable local, state, and federal laws, regulations, and standards.

Review NY State Guidelines for Reopening Higher Education Research

(https://www.governor.ny.gov/sites/governor.ny.gov/files/atoms/files/HigherEdResearch_ShortGuidelines.pdf)

Link also available on CCNY Research
Website
CCNY.CUNY.EDU/RESEARCH/RESEARCH-REOPENING

	Mandatory	Recommended Best Practices
Physical Distancing	<ul style="list-style-type: none"> ✓ For any research activities occurring indoors, total occupancy is limited to 50% of the maximum occupancy of a particular area as set by the certificate of occupancy. ✓ A distance of at least 6 ft. must be maintained among individuals at all times, unless safety or the core activity requires a shorter distance. Any time individuals must come within 6 ft. of another person, they must wear an acceptable face covering. 	<ul style="list-style-type: none"> ✓ Modify the use and or restrict the number of workstations (e.g. lab benches) so that individuals are at least 6 ft. apart in all directions (e.g. side-to-side and when face one another) and are not sharing workstations without cleaning and disinfection between use. ✓ Minimize the number of individuals needed to be at the location at a given time. Limit activities to only one individual where one individual can complete the activity safely (e.g. one individual present to feed animals).

CCNY Phasing In Research

Proposed Stages 1-2 Process

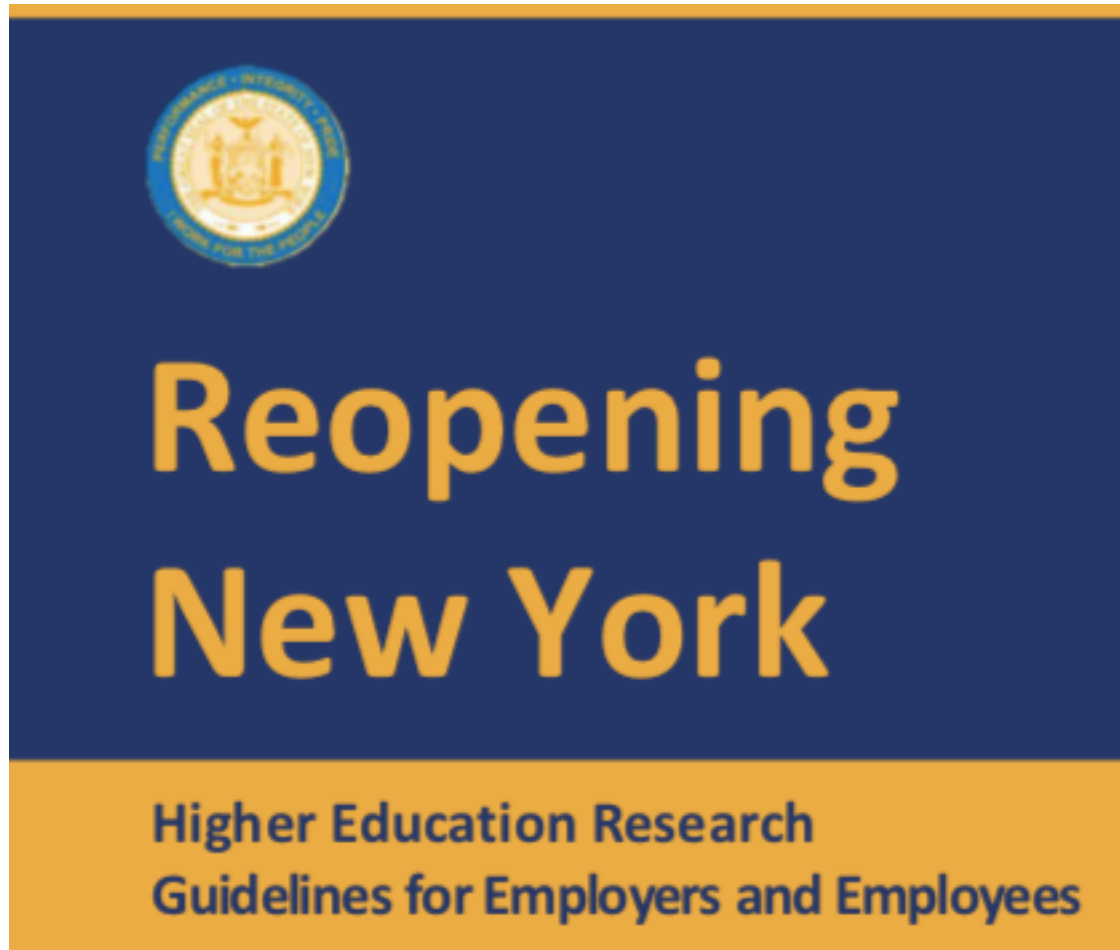
Stage 1
Planning and
Preparation for
Phased
Reopening

Stage 2
Time Sensitive
and some Field-
based Research

20-25%

- **PI Complete and Submit Online Research Reopening Plan**
- **Initial Goal for Phase 1 and 2 – Occupancy less than 25%**
- **Consider rotating personnel to allow research Progress**
- **Reviewed RRRB (Research Reopening Review Board)**
- **Final Approval by Provost**

NYC Current Reopening Status



- As of June 8, 2020 NYC Entered Phase 1
- Higher Education Research Included (as of June 8, 2020)
- Mandatory Guidelines for Employers and Employees
 - Physical Distancing
 - Protective Equipment
 - Hygiene, Cleaning and Disinfection
 - Communication
 - Screening

More information: <https://forward.ny.gov/phase-one-industries>

PI PLAN APPROVED BY PROVOST- WHAT NEXT????

PI will receive an approval email highlighting mandatory guidelines, such as:

Physical Distancing

- A distance of at least 6 ft. must be maintained among individuals at all times, unless safety or the core activity requires a shorter distance.

Protective Equipment

- Masks must be worn upon entering buildings and in ALL Common Areas

Hygiene, Cleaning and Disinfection

- Logs must be maintained documenting cleaning and disinfection

Communication

- Signs must be posted elucidating COVID-19 guidelines

Screening

- Continuing work to address this guideline - Daniel Fimiarz, Dean Perkins (Science)

Employee Daily Health Screening

Home screen
of app

CCNY Daily Check-In Survey



Record campus visit

Required for all employees and visitors

REGISTER

DAILY CHECK-IN

Step 1 –
Register for
system.
(Done once
only,
generates a
“Visitor ID”)



Campus Visitor Registration

All CCNY employees and visitors must register before visiting campus. You do not have to register multiple times.

Visitor:

Name

E-mail

Phone

To notify about possible exposure to COVID-19

Role

Affiliation

Department or Company

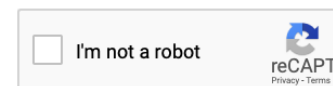
Responsible Party:

Name

CCNY Supervisor, Lab PI, or Facility Manager

E-mail

By clicking submit I agree to comply by all campus rules and regulations.



CLEAR

REGISTER

Step 2 – answer the three - four mandatory questions regarding COVID symptoms/exposure.

(*could generate a database of buildings/floor a research used)

Campus visit survey

Must be completed by all employees and visitors before visiting CCNY campus. **One submission/day is sufficient.**

Visitor's E-mail

Access Code

Provided during registration

Remember me

Do not use on public computers

In the last 14 days:

Have you experienced any new or worsening symptoms of COVID-19 that are not attributable to another condition? These include fever (temperature > 100.4°F , 38° C), chills, cough, shortness of breath, a loss of taste and/or smell, fatigue, muscle/body aches, headache, sore throat, runny nose, nausea or vomiting, diarrhea.

Yes No

Have you gotten a positive result from a COVID-19 test that tested saliva or used a nose or throat swab? (not a blood test)

Yes No

Were you notified by your medical provider or the NYC Test and Trace team to remain home because of COVID-19?

Yes No

Have you been in close or proximate contact with a person with a suspected or confirmed COVID-19 infection?

Yes No

CCNY locations visiting today

Reason for the visit

I hereby certify that the above statements are true and correct to the best of my knowledge. I understand that any false information will affect my access to the facilities of CCNY

CLEAR

SUBMIT

If any answers
are YES –
symptoms or
exposure:

- Researchers receive a message indicating campus and

tha
tha

Warning!

- Are you sure you wish to answer "Yes" to COVID-19 questions? hotline at 7682 or by

GO BACK

PROCEED [.edu](#)

- Contact their health care provider.

Step 3 –
Researcher
verifies that they
have answered
questions and if
all are “No”,
receives a visible
confirmation
screen.

Check-In Verification

Jun 18th, 2020

OK

Checked at: 11:15:27 AM

CLEAR

VERIFY

Proposed security entry procedure:



Guard checks access list for name (current procedure).



Guard checks researcher's phone for confirmation screen (new, to meet NYS mandates for reopening).



If check in has not occurred or technology fails, researcher answers the questions on a paper form and guard check that all are “No”.

When Will Buildings Reopen for Research?



- Soon (Anticipate Week of June 15 or June 22)
- RRRB/Provost Reviewing Research Restart Plans
- Each Building Working to Complete Mandatory NYS Research Restart Guidelines
 - Ordered Masks
 - Posting Necessary Signage
 - Cleaning Building Common Areas/Acquiring Hand Sanitizer Stations
 - Completing Required Health Screening Tool
- Requested Approval from CUNY

What to do While We Wait?



- Ensure PI has submitted Restart Plan if Part of the 25% Initial Staging
- Look out for Health Screening App Registration
- Continue to Analyze Data, Write Papers/Proposals, Plan Research
- Get TESTED!

COVID-19 Testing in New York City



<https://www1.nyc.gov/site/coronavirus/get-tested/covid-19-testing.page>

- All New Yorkers Should Get Tested Now, Whether Or Not You Have Symptoms Or Are At Increased Risk
- A Nasal Swab, Oral Swab Or Saliva Sample May Be Used.
- You Do Not Need Insurance To Get A Diagnostic Test
- Your Test Results Are Confidential
- Hundreds Of Testing Sites Across The City. Also Have Mobile Testing Units Visiting Boroughs

Research Reactivation



- Communication is the Key
- We are in this together; We Must take care of One Another
- Individual accountability and Responsibility
- “See Something – Say Something”
- Resources for Students– Advisor/Mentor, Program Director, Chair, Associate Dean for Research (me!)
- Resources for Faculty/Staff – Chair, Associate Dean for Research (me!), HR

QUESTIONS?

