

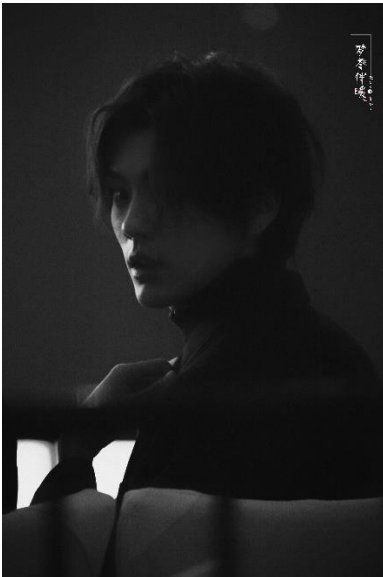
## DIRECTIONS FOR PHOTOS TAKING PICTURES ON PHONE, TABLET OR ZOOM



1. Photo should be taken outside, in a plain or not busy background. Avoid background with other people around. See example photo to the left.

2. Avoid dark backgrounds. See example photo to the left.

3. Avoid taking photos directly against the sunlight.



4. Photo should be captured in ***portrait*** mode (not landscape) – and should be taken waist up, avoid cutting off the top of the head.

5. If photos are taken with a phone, no selfies allowed. Please have someone take the photo for you. We will request retakes if we feel that the photo look “selfie-ish”. See sample graphic to the left.



6. When you upload/submit the photo, please make sure to check that it is 300 dpi, and at least 1500-2000 pixels wide.