

The City College
of New York



CONTINUING AND PROFESSIONAL STUDIES



SPRING 2024

COURSE CATALOG



Table of Contents

2024 Welcome Message	3
Academic Calendar	4
Our Partners	5
Our Policies	6-7
Allied Health	
Pharmacy Technician	8
Certified Nursing Assistant (CNA)	9
Medical Interpreter	10
Hemodialysis Technician	10
Certified Clinical Medical Assistant (CCMA)	11
Community Scientist Institute	12
EMT Certification	12
Online Certified Billing and Coding Specialist (CBCS)	13
Phlebotomy Technician	14
(EKG) Electrocardiogram Technician	14
CASAC	15
The English Language Institute	
The English Language Institute (ELI) English Language Program (F-1 Visa and Residents)	16
English as a Second Language (ESL) Courses and Programs:	17-18
ESL Saturday Intensive Program (Online).....	17
EL (English Language) Civics Program: A Pathway to U.S. Citizenship	17
English Intercultural Learning Program (EILP) (Online I-20 International)	18
Test Preparation	
General Equivalency Development (GED)	19
Professional Development	
Public Health Leadership and Management Foundations	20
Home-Based Business: Start and Operate Your Own	21
Foundations of Supply Chain Management (Tadaca Educational Solutions, LLC).	21
Professional Image Consulting: A Career Guidance	22
Build Your Brand: Brand Managing Identity	22
CPS Entrepreneurship Program (Kauffman FastTrac)	23
Digital Literacy - Microsoft Word, PowerPoint and Excel	24
Architecture Summer Career Lab (The Bernard & Anne Spitzer School of Architecture)	25
Security Guard Certification (CCNY Security Guard Training School)	26
GIS Fundamentals of Geographical Information Systems (GIS): Level 1	27
GIS Data Formats, Design and Quality: Level 2	27
Teaching Assistant Workshops:	28
Dignity for All Students Act (DASA)	28
Identification and Reporting of Child Abuse and Maltreatment	28
School Violence Prevention and Intervention Training	28
Personal Development	
Escribir Poesía en Español I / Writing Poetry in Spanish I	29
Information Technology	
CompTIA A+ Plus	30
CompTIA Network Plus	30
CISCO CyberOps	31
CISCO Certified Network Associate (CCNA)	31
Google IT Support Professional	32
AI and Machine Learning: Beginner Edition	32
Environmental Sustainability and Construction Safety	
Green Jobs Energy Training Program	33
Rangel Infrastructure Workforce Initiative:	34-35
GRPO Green Professional Training (GPRO) Series	34
GPRO Fundamentals of Building Green	34
GPRO Operations and Maintenance	34
GPRO Construction Management	34
40-Hour Hazwoper Certification	35
30-Hour OSHA Construction	35
10-Hour NYC DOB Site Safety Training (SST)	35
4-Hour Flagger	35
4-Hour Supported Scaffold User and Refresher	35
Online Open Enrollment Programs	
Ed2Go	36
Travel Directions	
Directions	37
Campus Map	38

Spring 2024 Welcome Message

This academic year at CCNY, the Office of Continuing and Professional Studies, is filled with enthusiasm for the possibilities and growth ahead. Our commitment to excellence and innovation remains unwavering, and I am excited to share some key developments that will shape our journey in the coming months.

One of our primary goals this semester is to strengthen our existing campus collaborations. The synergy created through partnerships across departments and disciplines is essential for fostering a vibrant and dynamic academic environment. Our previous shared initiatives, such as The Community Scientist Institute with CCNY's Biology Department, The Charles B. Rangel Innovative Workforce Initiative, the OASAS-certified CASAC Training Program through the CCNY Psychology Department, the NYC Department of Environmental Protection (DEP) with Civil Engineering Professor John Fillos, and the Architecture Summer Career Lab with The Bernard & Anne Spitzer School of Architecture continue to provide career opportunities and a more holistic educational experience for our students. By solidifying these connections, we can maximize our collective impact as we contribute to the legacy of The City College of New York.

Our commitment to staying at the forefront of job market demands and academic innovation is evident in the expansion of course offerings in the key field areas of healthcare, information technology, and our English Language Institute (ELI). Increased demand for additional classes acknowledges the growing success of our Allied Health courses and continued job growth in the profession; we introduced Electrocardiogram (EKG) and Phlebotomy Technician certification programs.

Our continued partnerships with Google and Cisco Academy and the resulting enrollment in these programs indicate the necessity for tech upskilling. A 2023 report on "The Future of Tech in America" by Per Scholas showed survey responses (650 C-suite executives, 100 hiring managers, and 1,500 office workers), of which 98% say "tech skills are likely to be essential across every work sector in the next ten years." For this spring 2024 semester, we added a Beginner Edition: AI and Machine Learning course for individuals and students who want to explore a career in data science and would benefit from an introductory approach. This course aligns with the rapidity of data driving change across every sector, such as health care, marketing, and cybersecurity.

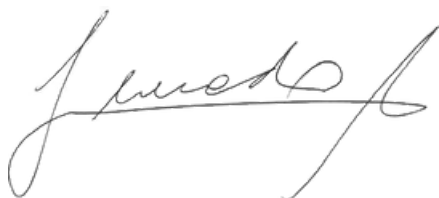
Also, a new online ESL program for international students, pending F-1 student visa approval, has been added to our English Language Institute (ELI). ELI's English Intercultural Learning Program (EILP) fosters diversity awareness in a virtual environment. In addition to improving language proficiency, the program will connect students globally. Guided class interactions will help them understand multiple perspectives and lifestyles different from their own. Students will develop intercultural proficiency, making the transition to our academic community and life in the United States easier.

Additional upcoming programs this spring, 2024, include an Entrepreneurship Program in collaboration with the Kauffman FastTrac, instructor-led by William Drewes, an employment lawyer with over 40 years of experience in business law, real estate, intellectual property, employment law, who specializes in diversity and inclusion workforce development. This course is designed to give students the knowledge to develop a business-ready plan and apply for a small business loan, creating access to opportunity. The aim is to empower individuals from marginalized communities to become entrepreneurs. We also look forward to continuing the introduction of new collaborations in 2024, including the Green Jobs Energy Training Program through the Environmental Engineering Department's Building Performance Lab at CCNY, among others.

We will continue progressing with expanded networks and new partnerships to provide our students and the extended communities we readily serve with high-quality courses and programs that ensure personal and professional success.

We hope you will take advantage of these valuable programs and embrace the unique student experience as part of CCNY Continuing and Professional Studies.

Sincerely,



Dean Juan Carlos Mercado

Academic Calendar

Fri, December 29, 2023 - Mon, January 1, 2024	New Years Day Observed	<i>Office Closed - No Classes</i>
Sat, January 13 - Mon, January 15	Martin Luther King Jr Day	<i>Office Closed - No Classes</i>
Sat, February 10 - Mon, February 12	Lincoln's Birthday	<i>Office Closed - No Classes</i>
Sat, February 17 - Mon, February 19	Presidents Day Weekend	<i>Office Closed - No Classes</i>
Fri, March 29 - Sat, March 30	Easter Weekend	<i>Office Closed - No Classes</i>
Mon, April 22 - Tues, April 30	Spring Break	<i>No Classes</i>
Sat, May 25 - Mon, May 27	Memorial Day Weekend	<i>Office Closed - No Classes</i>
Wed, June 19	Juneteenth	<i>Office Closed - No Classes</i>
Thurs, July 4th	Independence Day	<i>Office Closed - No Classes</i>
Sat, August 31 - Mon, September 2	Labor Day Weekend	<i>Office Closed - No Classes</i>
Wed, October 2 - Fri, October 4	Rosh Hashanah	<i>No Classes</i>
Fri, October 11 - Sat, October 12	Yom Kippur	<i>No Classes</i>
Mon, October 14	Columbus Day	<i>Office Closed - No Classes</i>
Wed, November 27 - Sat, November 30	Thanksgiving Break	<i>Office Closed - No Classes</i>
Wed, December 18 - Wed, January 1, 2025	Winter Break	<i>Office Closed - No Classes</i>

Our Partners



Our Policies

How to Register:

Online by visiting www.cps.ccny.edu and clicking the "Registration" tab. After reaching our registration system page, you can click "Create Account" to create an account on our system that will allow you to add courses to your cart. Now you're ready to checkout!

In-Person by visiting CCNY CPS, Shepard Hall, Room 2.

Phone (212) 650-7312

Email ace@ccny.cuny.edu

Enrollment Requirement:

The Office of Continuing and Professional Studies courses are accessible and open to the public. They are available in various formats and modalities: in-person, hybrid, online synchronous, and online asynchronous. This maximum flexibility allows our students to align their learning goals with their preferred learning mode, and enrollment in the university is not required to take these courses. Kindly note that a high school or GED/HSE diploma is required to enroll in most of our certificate programs.

Payment Plans:

Students can apply for a payment plan for open courses with a tuition cost of \$500 or more. If interested, kindly contact the Office of Continuing and Professional Studies. Please note that a 50% down tuition payment and the non-refundable \$25 registration fee are required to enroll in a payment plan. Please email us at ace@ccny.cuny.edu for more information.

Refund Policy:

Refund requests must be submitted in writing via email at least five business days before the first day of class. A 100% refund, including the registration fee, will be issued if CPS cancels a course. If the student withdraws at least five business days before the first day of class, a 100% refund will be issued (less the \$25 registration fee). Refunds for one- or two-day workshops are only issued if the class is canceled. Be advised that non-attendance does not constitute a withdrawal or request for a refund. It is important to note that refunds are not issued after the first class session.

Refund requests are processed within approximately 6 to 8 weeks upon receipt and approval by the Office of Continuing and Professional Studies. Credit card refunds are credited to the card used for registration. Payments made by money orders and business checks are refunded via a mailed check.

Certificate Program Requirements:

Our certificate programs are designed to equip individuals with the appropriate level of skills in the least amount of time possible to prepare for the workforce. Most programs require at least a High School or HSE Diploma, formerly GED, for admittance. Please review the specific certificate program to determine requirements or visit our website: www.cps.ccny.edu.

Discounts:

Senior citizens receive a discount of \$25 applied towards the \$25 registration fee for any open course costing \$99 or more (except computer courses). CCNY faculty, staff, and students receive a 10% course discount (except where exclusions may apply). Receive a 10% tuition discount when your referral registers for a class of equal or greater value. Once eligible, you must show an appropriate ID to show you are a current student or employee at CCNY. Discounts cannot be combined with any other offers. A 10% discount on tuition is also available when your referral registers for a course of equal or greater value. Once eligible, you must present a valid ID confirming your current CCNY affiliation. Discounts cannot be combined with any other offers.

Course Date Changes & Course Cancellations:

Continuing and Professional Studies courses are subject to a minimum enrollment. We reserve the right to cancel any class that does not meet the minimum registration required. If a course is canceled, students will receive a full refund and may request additional options from our office.

All course dates are subject to change as deemed necessary by our office.

Classroom Location:

Students enrolled in on-campus classes will receive an email with classroom information within one week of the course start date.

Our Policies

Weather Closings:

CCNY can occasionally be closed due to extreme weather conditions. If there is a blizzard or other hazardous weather conditions, please call 212-650-7000 or visit the CCNY website, www.ccny.cuny.edu, for more information.

Incomplete (INC) Grades Policy:

The grade of "INC" (incomplete) is temporary and given by the instructor with the following guidelines:

When the student has been consistent with passing coursework, and the instructor acknowledges the student can successfully complete the course requirements by the last day of the eighth week, or its equivalent in calendar time, of the following semester. The student must provide an acceptable and documented reason for not completing the coursework on time.

If the student does not submit the coursework accordingly, the grade will change to an "F" (Fail), and the student will forfeit the possibility of changing the incomplete status. The "F" grade will be permanent on the student record unless the instructor has submitted a passing grade. The Office of Continuing and Professional Studies will convert temporary "INC" grades to "F" by the ninth week of the following semester.

CUNY Alerts:

CUNY Alert is the emergency notification service of the colleges and offices of the City University of New York. To create a CUNY Alert guest account and enable notifications, please view the following document: <https://www.cuny.edu/wp-content/uploads/sites/4/page-assets/cuny-alert/CUNY-Alert-Guest-Account-Instructions.pdf>.

Grants & Scholarships:

Career Success Scholarship: The Helena Rubenstein Foundation has long supported Continuing Education students at CUNY who pursue career advancement through education and training. This spring 2024 semester, students who need tuition assistance can apply for the Helena Rubenstein Career Success Scholarship, which is available to cover up to 90% of a certificate program's tuition fees.

Scholarship availability is limited; the deadline to apply is January 10, 2024, by 4:59 p.m. Prospective students interested in enrolling at CPS should contact the CCNY CPS scholarship liaison, Denisse Fernandez, at dfernandez2@ccny.cuny.edu. For more scholarship information, visit: <https://www.cuny.edu/academics/cpe/helena-rubinstein-scholarship/>

Adult Education Program GED/ESL Courses: For over two decades, the CPS grant-funded Adult Education Program at CCNY has served adult learners by providing tuition-free classes that prepare its students to gain access to higher education, pursue post-secondary training, and build their knowledge base to secure employment and achieve financial independence. These program efforts continue strengthening the Harlem community and the greater New York area.

The Adult Education Program offers General Education Development (GED) test preparation classes that aid students in obtaining a New York State (NYS) High School Equivalency (HSE) Diploma; it also provides English as a Second Language (ESL) courses that help non-English speakers achieve competency in reading, writing, speaking, and comprehension of the English Language. Additionally, students receive college and career advisement, job readiness training, and job placement assistance. The classes are available in the morning and evening during weekdays. Students must first attend an orientation and take a placement test before registration; registration is on a first-come, first-served basis. For program enrollment, please complete the waiting list registration form:

GED waiting list registration form: <https://www.ccny.cuny.edu/cps/ged>

ESL waiting list registration form: <https://www.ccny.cuny.edu/cps/esl>

The CUNY Upskilling Scholarship: This grant-funded scholarship by the NYS Department of Labor aims to provide no-cost, relevant, short-duration virtual-based training to assist individuals with professional development, improve their skills, and meet NYC's job demand in high-growth industries.

Students interested in applying must first meet the eligibility requirements, per the NYS Department of Labor, as follows:

- Be legally permitted to work in the U.S.,
- be a New York resident
- be unemployed or underemployed
- provide a Social Security Number as part of the application

For information on additional no-cost training options, please visit the CUNY Upskilling website at <https://www.cuny.edu/about/administration/offices/ocip/students/upskilling/>

Allied Health

Allied health is related to the delivery mode of health services that differs from medicine and nursing. As an essential role in the healthcare system, Allied health professionals directly provide services to patients or serve in roles that support medical staff or healthcare providers. Many professions in allied health aim to optimize health and function, improving overall quality of life.

Field Outlook: The U.S. Bureau of Labor Statistics projects that employment of allied health professionals will grow 13% from 2021 to 2031.

60% of the healthcare workforce consists of allied health professionals. *Source: asahp.org*



Pharmacy Technician

CERTIFIED BY THE PHARMACY TECHNICIAN CERTIFICATION BOARD (PTCB)



Field Outlook: The U.S. Bureau of Labor Statistics predicts a 6% increase in demand for pharmacy technicians from 2022 to 2032, with approximately 44,900 job openings annually over the decade.

This 75-hour certificate program, offered by CPS at CCNY for over ten years, has resulted in high course completion rates and PTCB-credentialed pharmacy technicians. Our expert staff instructors provide consistent support to ensure student success through high-quality online synchronous course instruction, preparing them for a rewarding career in the pharmacy technician field.

The coursework covers essential topics, such as Pharmacy Law, Human Anatomy and Physiology, Medical Terminology, and Pharmacology, including the mathematical concepts required for the accurate preparation and dispensation of medicine. The program provides students with the foundational knowledge for employment across various healthcare establishments, including community and chain pharmacies and hospitals. Students will gain proficiency in managing pharmacy operations, maintaining medication inventory control systems, and providing patient services.

After completing the course requirements, students will be awarded a program certificate by The CCNY Office of Continuing and Professional Studies. Our program is PTCB-recognized as it offers training that prepares students to pass the nationally recognized Pharmacy Technician Certification Exam (PTCE) and earn a PTCB Certified Pharmacy Technician Certification (CPhT) credential.

For more information regarding PTCB CPhT Certification, visit ptcb.org.

Tuition: \$800

Prerequisite: High School or GED/HSE Diploma

February 5 - May 15

Mondays and Wednesdays 6 a.m. - 9 p.m. | 30 Sessions

February 24 - June 22

Saturdays 9:00 a.m. - 4:00 p.m. | 15 Sessions

*Tuition cost includes a \$25 non-refundable registration fee.
PTCE fee and course books are not included in the tuition cost.*

REMOTE



Certified Nursing Assistant (CNA)



HYBRID

APPROVED BY NEW YORK STATE EDUCATION DEPARTMENT (NYSED)

Field Outlook: The U.S. Bureau of Labor Statistics projects a 4% growth in job openings for nursing assistants from 2022 to 2032, resulting in an estimated 209,400 job opportunities annually over the decade.

This New York State Education (NYSED) approved 130-hour certificate program is offered in a hybrid learning format, with online synchronous classroom instruction and a 30-hour in-person clinical externship at a nursing facility. Course topics include Anatomy and Physiology, Basic Life Support, and the Fundamentals of Patient Care. Students will learn how to assist patients with daily living tasks by providing primary care services, such as bedmaking, grooming, and measuring vital signs. Students are assigned to a clinical externship in a nursing home during the program's final four (4) to six (6) weeks.

Certified Nursing Assistants (CNAs) work under the supervision of a registered nurse (RN), licensed practical nurse (LPN), physician assistant (PA), nurse practitioner (NP), medical doctor, or other supervisory staff in a healthcare facility.

Tuition: \$1,260

Prerequisite: High School or GED/HSE Diploma

April 1 - June 6

Monday - Thursday 6 - 9 p.m. | 43 Sessions

Things to know:

- This program's online portion is delivered via Zoom and Google Classroom. You will need access to a computer with a camera for virtual engagement.
- You must have your camera on during each Zoom class session, except for instructed breaks. Also, any minor children will need supervision away from the camera.
- Medical clearance must include a recent drug screen within the first two (2) weeks of classes.
- Your future employer will request fingerprinting and conduct a criminal history and background check.
- You must wear Personal Protective Equipment (PPE) at the clinical site.
- We suggest you visit this site, www.prometric.com/nurseaide/ny, for certification exam details.

Tuition cost includes a \$25 non-refundable registration fee. Textbooks, medical exams, uniforms, CPR certification, and certification exam fees are not included in tuition.

If the clinical rotation is not completed in your registered class, you must pay a fee for a newly scheduled clinical rotation.

Medical Interpreter

Field Outlook: The U.S. Bureau of Labor Statistics projects a 4% growth in job openings for interpreters and translators from 2022 to 2032, resulting in an estimated 7,200 job opportunities annually over the decade.

The Medical Interpreter Certificate Program at The City College of New York offers a comprehensive learning approach to becoming a professional medical interpreter. The curriculum covers the Code of Ethics, Standards of Practice, hospital regulations, and cultural competence. It provides practice of the necessary skills and techniques to master consecutive and simultaneous interpretation and sight translation. It imparts knowledge of medical terminology and basic principles of anatomy and physiology.

This 102-hour online course is designed to train entry-level medical interpreters in English and Spanish. The course prepares students to meet the needs of medical facilities such as hospitals, clinics, doctors' offices, and emergency rooms. Many hospitals now rely on telephone interpreters to assist patients. CCNY's Medical Interpreter program is the only one incorporating telephonic interpretation and role play into its curriculum. Students also receive targeted assistance with resume writing, interview skills, and career development.

Students will also prepare for the National Certification exam and obtain live sessions by our certified instructor.

Tuition: \$1,749

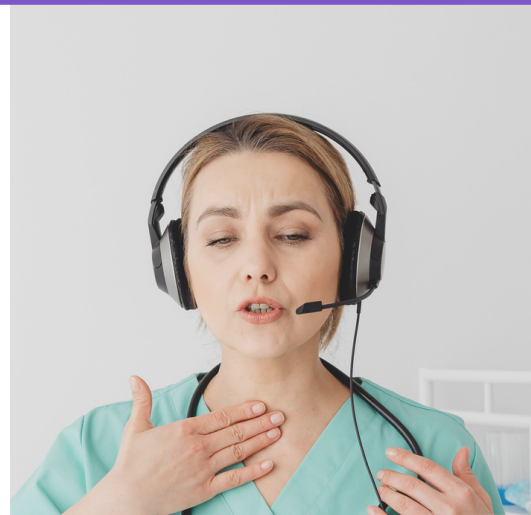
Prerequisite: High School or GED/HSE Diploma

February 7 - June 26

Mondays and Wednesdays 6:30 p.m. - 9:30 p.m. | 34 Sessions

Tuition cost includes a \$25 non-refundable registration fee.

Exam fee and course books are not included in the tuition cost.



REMOTE

Things to know:

- Before registering for the Medical Interpreter program, a diagnostic exam is mandatory.
- Students must be able to communicate verbally in English and Spanish to participate in classes.

Hemodialysis Technician

Field Outlook: The U.S. Bureau of Labor Statistics projects a 5% growth in job openings for clinical laboratory technicians from 2022 to 2032, resulting in an estimated 24,000 job opportunities annually over the decade.

Well-trained professionals who are skilled in hemodialysis treatment are needed to meet the increase in chronic kidney-related illnesses. Working with Medical Careers Prep Academy, The City College of New York provides comprehensive online training to become a hemodialysis technician. Hemodialysis Technicians perform under the direction of nurse physicians and will be responsible for providing patient care, hemodialysis machines, and monitoring patient care.

Essential topics for training focus on:

- Kidney anatomy and physiology
- Renal nutrition
- Water treatment
- Vascular access
- Infection control
- Medication complications
- Dialysis machine set-up
- Patient monitoring

Registered nurses who take this course supervise technicians in hemodialysis facilities treating End-Stage Renal Disease (ESRD) patients.

Tuition: \$1,604

Prerequisite: High School or GED/HSE Diploma

For more information about upcoming sessions for this course, please contact our office: ace@ccny.cuny.edu or 212-650-7312

Tuition cost includes a \$25 non-refundable registration fee. Exam fee and course books are not included in the tuition cost.

MEDICAL CAREERS
PREP ACADEMY, INC.



REMOTE

Certified Clinical Medical Assistant (CCMA)

CERTIFIED BY THE NATIONAL HEALTHCARE ASSOCIATION (NHA)



FLEXSTAFF

The Connection You Need

Field Outlook: The U.S. Bureau of Labor Statistics projects a 14% growth in job openings for certified medical assistants from 2022 to 2032, resulting in an estimated 114,600 job opportunities annually over the decade.

This 320-hour hybrid course prepares students to work as multi-skilled health professionals and perform administrative and designated clinical duties under the direction of a physician. Administrative tasks may include scheduling appointments, managing medical records, billing, and coding for insurance and patient invoices.

Clinical duties may include:

- Take and record vital signs and medical histories
- Preparing patients for examinations
- Drawing blood specimens
- Administering medications as directed by a physician.

With the integration of these two skills, students will gain sufficient knowledge to perform various medical assistant tasks and prepare for the National Health Career Association (NHA) certification examination. Medical assistants work in physicians' offices, hospitals, outpatient clinics, and other healthcare facilities.

Course Topics:

- Medical Terminology
- Anatomy and Physiology
- Clinical Practice
- EKG and Phlebotomy
- Vital Signs
- CPR
- Business Practice
- Job Readiness

March 11 - August 12

Mon. - Thurs. 5:30 p.m. - 9:30 p.m. | 80 Sessions

Upon completing the course, students are encouraged to take the Certified Clinical Medical Assistant certification examination by the NHA.

The NHA examination fee is not included in the tuition.

Tuition: \$3,224

Prerequisite: High School or GED/HSE Diploma

Tuition cost includes a \$25 non-refundable registration fee.

Exam fee and course books are not included in the tuition cost.

Program Highlight:

Upon completing the program, students can participate in a paid or unpaid externship with Northwell Hospital via FlexStaff.

HYBRID

Community Scientist Institute



IN-PERSON

This 8-week course is offered through The City College of New York's Office of Continuing and Professional Studies is designed for individuals interested in developing community-relevant research in addressing the cancer burden in NYC. Cancer is the leading cause of premature death before the age of 65.

Participants in this course learn about cancer research and clinical trials, develop skills to prepare for involvement with projects and programs focused on cancer research and health advocacy and engage in networking and professional development opportunities.

With the increasing onset and diagnosis of cancer, it's essential to involve **more voices** to develop new ways of reducing the cancer burden. Participants are to attend in-person sessions on Saturdays and review the course material online for each module before each class.

Tuition cost includes a \$25 non-refundable registration fee. Exam fee and course books are not included in the tuition cost.



Course Modules:

- Introduction to Cancer and Why Community Scientists are Essential (Week 1)
- Cancer Research (Week 2)
- Clinical Trials (Week 3)
- Clinical Research Training- Part I (Week 4)
- Clinical Research Training- Part II (Week 5)
- Health Education and Community-Based Participatory Research (Week 6)
- Career Development Workshops (Week 7)
- Final Presentation (Week 8)

January 27 - March 23

Saturdays 9:30 a.m. - 2:00 p.m. | 8 Sessions

After completing this course, students will serve as community advocates and obtain career development skills.

Tuition: \$555

Prerequisite: High School or GED/HSE Diploma

EMT Certification

Field Outlook: The U.S. Bureau of Labor Statistics projects a 5% growth in job openings for EMTs and paramedics from 2022 to 2032, resulting in an estimated 18,100 job opportunities annually over the decade.

This course is conducted by the New York State Course Sponsor **Rescue Training International, Inc., at The City College of New York.** This course prepares candidates to become NYS Department of Health Emergency Medical Technicians.

The student tuition includes the following items: an EMT Course Text Book, a CPR Course, an EAT-Student Uniform Shirt, and an EMT Equipment Package, which consists of an adult Blood Pressure Cuff, Stethoscope, Penlight, Pocket Face Mask, Oxygen Key, and EMT Shears. There are no additional costs or hidden fees.

Students who are members of EMS agencies and are utilizing a voucher for this course will be responsible for the administrative fee of \$300. Please select "\$300-down payment" and indicate in the notes which agency you are a member or employee of.



**RESCUE
TRAINING
INTERNATIONAL**

Tuition: \$1,299

Prerequisite: High School or GED/HSE Diploma

Synchronous learning:

Students must attend Tuesdays and Thursdays. (Students have a flexible option and may choose to attend either the 10 AM OR 6 PM via Zoom).

Asynchronous lessons:

Delivered through our Learning Management System

June 4 - August 15

Tuesdays and Thursdays 6 - 10 p.m.

Hands-on learning (at the City College Campus): Delivered in person on Tuesdays and Thursdays, starting on July 18, 2024, from 6 - 10 p.m.

<https://auraprep.enrollware.com/enroll?id=8533505>

September 3 - December 19

Tuesdays and Thursdays 6 - 10 p.m.

Hands-on learning (at the City College Campus): Delivered in person on Tuesdays and Thursdays, starting on Nov. 7, 2024, from 6 - 10 p.m.

<https://auraprep.enrollware.com/enroll?id=8533548>



HYBRID

Certified Billing & Coding Specialist (CBCS)



REMOTE

CERTIFIED BY THE NATIONAL HEALTHCARE ASSOCIATION (NHA)

Field Outlook: The U.S. Bureau of Labor Statistics projects a 8% growth in job openings for medical records specialists from 2022 to 2032, resulting in an estimated 15,000 job opportunities annually over the decade.

This new 170-hour online synchronous course includes submitting billing data and following up on claims with health insurance companies to receive payment for services rendered by healthcare providers.

This course prepares you to work as a Certified Medical Billing and Coding Specialist (CBCS) in outpatient medical facilities, such as physicians' offices, clinics, hospitals, auditing companies, and related facilities.

Course topics include Medical Terminology, Anatomy and Physiology, Medical Coding, Revenue Cycle Management, and Health Insurance - Legal and Compliance Responsibility. Students will accurately apply coding principles to assign codes based on the human body systems in medical billing and coding.

All instructors are CBCS National Healthcare Association (NHA) Certified: AAPC-CPC and CPC-I, with at least ten (10) years of experience as coders and coding instructors. Upon completion, students are encouraged by the NHA Career Association to take the CBCS certification exam.

*Tuition cost includes a \$25 non-refundable registration fee.
Exam fee and course books are not included in the tuition cost.*



PART 1:

March 5 - May 21

Tue, Wed, & Thurs 6 - 9 p.m. | 30 Sessions

Tuition: \$995

Prerequisite: High School or GED/HSE Diploma

PART 2:

May 28 - July 25

Tue, Wed, & Thurs 6 - 9 p.m. | 28 Sessions

Tuition: \$1,280

Prerequisite: Completion of Part 1

Phlebotomy Technician

Field Outlook: The U.S. Bureau of Labor Statistics projects a 5% growth in job openings for clinical laboratory technicians from 2022 to 2032, resulting in an estimated 18,100 job opportunities annually over the decade.

Our HYBRID 60-Hour Phlebotomy Technician certificate program is perfect for CNAs and other patient care professionals who want to become Certified Patient Care Technicians (PCTs) and are passionate about helping others.

Phlebotomy Technician positions are available in various settings, including hospitals, medical group practices, neighborhood health centers, and medical labs.

Phlebotomy Technician

Students will learn how to:

- draw blood from patients or donors,
- assemble equipment (such as needles, blood collection devices, gauze, tourniquets, cotton, and alcohol),
- obtain blood from capillaries,
- play a vital role in the diagnosis and treatment of diseases.

Tuition: \$1,275

Prerequisite: High School or GED/HSE Diploma

June 3 - July 9

Mon, Tue, Wed, and Thurs 6 - 9 p.m. | 20 Sessions

In person Labs on Thursdays

Upon successful completion of the course, students will be eligible to take the National Healthcareer Association (NHA) certification exam.

Tuition cost includes a \$25 non-refundable registration fee.

Exam fee and course books are not included in the tuition cost.

HYBRID



nha 

(EKG) Electrocardiogram Technician

Field Outlook: The U.S. Bureau of Labor Statistics projects a 10% growth in job openings for diagnostic medical sonographers from 2022 to 2032, resulting in an estimated 9,600 job opportunities annually over the decade.

Our HYBRID 60-Hour EKG Technician certificate program is perfect for CNAs and other patient care professionals who want to become Certified Patient Care Technicians (PCTs).

This EKG course prepares students to assist patients with Holter monitoring and stress testing under the supervision of medical professionals. EKG positions are available in various settings, including hospitals, doctors' offices, and nursing homes.

(EKG) Electrocardiogram Technician

Electrocardiography provides techniques for learning about the following topics:

- basic cardiac physiology,
- how to identify heart problems,
- how to perform 12-lead electrocardiograms (EKG),
- how to identify normal heart rhythm and arrhythmia,
- how to troubleshoot technical issues with an EKG.

Tuition: \$824

Prerequisite: High School or GED/HSE Diploma

March 11 - April 11

Mon, Tue, Wed, and Thurs 6 - 9 p.m. | 20 Sessions

In-person Labs on Thursdays

Students will be eligible to take the NHA certification exam after completing the course.

Tuition cost includes a \$25 non-refundable registration fee.

Exam fee and course books are not included in the tuition cost.

nha 



HYBRID

CASAC

Credentialed Alcoholism and Substance Abuse Counselor Training Program

OASAS Certified

The City College
of New York



CONTINUING AND
PROFESSIONAL STUDIES

The City College
of New York



Colin Powell School
for Civic and Global Leadership

Field Outlook: The U.S. Bureau of Labor Statistics projects an 18% growth in job openings for substance abuse counselors from 2022 to 2032, resulting in an estimated 42,000 job opportunities annually over the decade.

The Office of Continuing and Professional Studies, in collaboration with the Psychology Department of the Colin Powell School for Civic Leadership at CCNY, is excited to announce the NYS OASAS-certified CASAC Training Program. This program offers ten (10) OASAS-approved courses that meet the NYS 350 hours of education training required to obtain the CASAC-Trainee credential.

Program Highlights

- This program satisfies the academic component of the New York State License in Alcohol and Substance Abuse Counseling.
- It focuses on the psychopharmacological and physiological aspects of drugs, signs, symptoms, and stages of alcoholism, individual and group counseling skills, the ethics of confidentiality, family treatment, and multicultural issues.
- The training will prepare you for a career in substance abuse counseling or enhance your skills as a social worker, psychologist, psychiatrist, rehabilitation counselor, mental health counselor, substance abuse counselor, marriage and family therapist, or school counselor.

CASAC Credential Information:

Satisfactory completion of 350 hours of education/training, supervised-practical training, and documented work experience, as well as passing the NYS Office of Alcoholism and Substance Abuse Services (NYS-OASAS) written examination, are required for the Credentialed Alcoholism and Substance Abuse Counselor (CASAC) designation.

Total Program Tuition: \$5,000

Individual Course Tuition: \$500

Prerequisite: High School or GED/HSE Diploma

For complete information on the CASAC credentialing process in NYS, please visit

<https://on.ny.gov/3nlyWHb>.

For further information, please contact our office at ace@ccny.cuny.edu.

Dates: January 25 - May 22

Mind, Brain, and Experience (PSY 254)	Section 1: Mon. and Wed. 2:00 p.m. - 3:15 p.m. Section 2: Mon. and Wed. 9:30 a.m. - 10:20 a.m. Section 3: Mon. and Wed. 5:00 p.m. - 6:15 p.m.	NAC 7/236 BH - 210 NAC 6/325
Counseling Issues in Addiction (PSY 370)	Mondays and Wednesdays 6:30 p.m. - 7:45 p.m.	Online - Synchronous
Drug and Alcohol Abuse: Causes and Treatment (PSY 340)	Section 1: Mon. and Wed. 11:00 a.m. - 12:15 p.m. Section 2: Saturdays 9:00 a.m. - 11:30 a.m.	Online - Synchronous Online - Synchronous
Family Psychology (PSY 365)	Tuesdays and Thursdays 5:00 p.m. - 6:15 p.m.	NAC 6/325
Introduction to Clinical and Counseling Psychology (PSY 380)	Tuesdays and Thursdays 9:30 a.m. - 10:45 a.m. 2:00 p.m. - 3:15 p.m.	NAC 7/236 Online - Synchronous
Introduction to Life-Span Development (PSY 226)	Section 1: Mon. and Wed. 9:30 a.m. - 10:45 a.m. Section 2: Saturdays 9:30 a.m. - 12:00 p.m.	NAC 6/235 Online - Synchronous
Psychology of Prevention (PSY 363)	Tuesdays and Thursdays 11:00 a.m. - 12:15 p.m.	NAC 7/236
Small Group Processes (PSY 367)	Mondays and Wednesdays 3:30 p.m. - 4:45 p.m.	NAC 7/236
The Psychology of Infancy and Childhood (PSY 246)	Section 1: Mon. and Wed. 11:00 a.m. - 11:50 a.m. Section 2: Tues. and Thurs. 6:30 p.m. - 7:45 p.m.	BH - 210 Online - Synchronous
Treatment of Substance Abuse I (PSY 350)	Saturdays 12:00 p.m. - 2:30 p.m.	Online - Synchronous
Treatment of Substance Abuse II (PSY 360)	Mondays and Wednesdays 8:00 p.m. - 9:15 p.m.	Online - Synchronous

Tuition cost includes a \$25 non-refundable registration fee. Exam fee and course books are not included in the tuition cost.



The English Language Institute (ELI)

ENGLISH FOR INTERNATIONAL STUDENTS AND RESIDENTS

The CCNY's Office of Continuing and Professional Studies - English Language Institute (ELI) provides high-quality academic ESL instruction to international and resident students preparing to study at an American university, building their language skills for professional advancement, or improving their communication skills as personal development. Students will benefit from our experienced language educators, flexible schedule of classes, and supportive university environment.



ELI-English Language Program

ELI's English Language Program at CCNY offers Master Speaking courses that range from beginning Fundamentals to Level 5. Each level requires 18 hours of class time per week. **This 5-level intensive program**, developed with the needs of our students in mind, incorporates practical conversation, reading, writing, grammar, and pronunciation at every level. **The schedule provided meets F-1 Student Visa criteria and requirements.**

After completing the program, students who meet our GPA program requirements can apply for undergraduate and graduate programs at City College—no TOEFL exam needed!

Individuals who want to study English in the United States on an F-1 Student Visa may apply using the immigration Form I-20 through The City College of New York Office of Continuing and Professional Studies. Current F-1 Visa students may also transfer from another school.

For further information, please contact our office at eli@ccny.cuny.edu.

\$25 Non-Refundable Registration Fee included in Tuition. Exam Fee, and Books are not Included in Tuition.

April 15 - May 29

Mon. - Thurs. 9:30 a.m. - 2:30 p.m.

June 10 - July 16

Mon. - Thurs. 9:30 a.m. - 2:30 p.m.

July 15 - August 15

Mon. - Thurs. 9:30 a.m. - 2:30 p.m.

F-1 STUDENTS MUST REGISTER FOR 15 WEEKS.

Tuition: \$925

F-1 VISA Tuition:

- 2 Sessions: \$1,850
- 3 Sessions: \$2,725

IN-PERSON



ESL Saturday Intensive Program



REMOTE

ESL Saturday Intensive Program

This online Saturday Intensive ESL program helps non-native English speakers develop proficiency in grammar, reading, listening, speaking, and writing skills and builds students' skills for success in college and the workplace.

Class Levels:

- Basic
- Beginner
- Intermediate
- Advanced

Tuition: \$355

Prerequisite: 18 years and older

April 6 - May 18

Saturdays 10:00 a.m. - 2:00 p.m. | 24 Hours | 6 Sessions

June 1 - July 6

Saturdays 10:00 a.m. - 2:00 p.m. | 24 Hours | 6 Sessions

Tuition cost includes a \$25 non-refundable registration fee.

Exam fee and course books are not included in the tuition cost.

EL (English Language) Civics Program: A Pathway to U.S. Citizenship

The EL (English Language) Civics program integrates English literacy and civics education for non-native speakers. The classes are offered both in-person and online for scheduling accommodations. The course incorporates interactive language workshops, civic lessons, group discussions, and practical exercises. Students participating in the program will benefit from engaging class sessions; you will build your English language proficiency skills and learn about U.S. history, government, citizenship, geography, and culture.

This course makes learning easy by combining English language proficiency with practical civic knowledge, setting you on the path to achieving U.S. citizenship. The course covers topics as follows:

English Language Proficiency:

- Listening, speaking, reading, and writing skills development.
- Vocabulary and grammar exercises tailored to real-life situations.

Civics Education:

- U.S. government structure and functions.
- Rights and responsibilities of U.S. citizens.

Cultural Competence:

- Understanding and embracing American cultural diversity.
- Navigating daily life and community interactions.

Community Engagement:

- Exploring local community resources.
- Building connections and fostering a sense of community.

Who Should Enroll:

- English Language Learners (ELL) and English as a Second Language (ESL) individuals interested in becoming U.S. citizens.
- Immigrants who want to improve their English language proficiency skills and learn about American culture.

Upon completion, participants will improve their English language proficiency and acquire a meaningful understanding of U.S. civics and responsibilities.

Tuition cost includes a \$25 non-refundable registration fee.

Exam fee and course books are not included in the tuition cost.

IN-PERSON

April 6 - June 29

12 Sessions

Saturdays

10:00 a.m. - 4:00 p.m.

REMOTE

April 15- June 26

20 Sessions

Mondays and Wednesdays

6 - 9 p.m.

Tuition: \$524

Prerequisite: 18 years and older

English Intercultural Learning Program (EILP)

REMOTE



This online ESL program is designed for international students and F-1 visa pending students. ELI's English Intercultural Learning Program (EILP) fosters diversity awareness in a virtual environment. In addition to improving language proficiency, the program will connect students globally. Guided class interactions will help students understand multiple perspectives and lifestyles different from their own. Students will develop intercultural proficiency, making the transition to our academic community and life in the United States easier.

Course Objectives:

1. Cultivate a strong command of English grammar for effective communication.
2. Foster language skills essential for a smooth transition to life in the United States.
3. Gain insights into diverse cultures, customs, and social dynamics.
4. Prepare students for the linguistic demands of living, studying, and working in the United States.

Course Structure:

Module 1: Foundations of Global English (Sessions 1-3)

Module 2: Navigating International Communication (Sessions 4-8)

Module 3: Advanced Language Proficiency (Sessions 9-12)

Module 4: Integrating into American Society (Sessions 13-15)

The English Intercultural Learning Program (EILP) aims to prepare international ESL students to confidently communicate in English and navigate diverse cultural contexts. This program embraces the interconnectedness of language and culture. It is dedicated to providing our community of international learners with a holistic learning experience for students and enriching their global perspective.

Tuition: \$424

April 16 - June 4

Tuesdays and Thursdays

30 Hours | 15 Sessions| 2 Hours each

Contact eli@ccny.cuny.edu for time zone accommodation requests.

*Tuition cost includes a \$25 non-refundable registration fee.
Exam fee and course books are not included in the tuition cost.*

Test Preparation



General Educational Development (GED)

This 90-hour course prepares students to pass the General Educational Development (GED) Test and earn a High School Equivalency (HSE) Diploma. Completing our GED course will build students' skills for college and workplace success. It can improve employability and provide access to higher education and vocational training.

This class prepares you for the four content areas in the GED Test:

- Reasoning through Language Arts
- Social Studies
- Science
- Mathematical Reasoning

Course Requirements:

- Age Requirement: 18 years of age and above.
- Residency Requirement: Must be a New York State Resident.
- Students must attend an in-person placement (TABE) test to determine eligibility.

Tuition: \$499

March 16 - August 3

Saturdays | 9:30 a.m. - 3:00 p.m. | 18 sessions

Tuition cost includes a \$25 non-refundable registration fee.

Exam fee and course books are not included in the tuition cost.

REMOTE

Professional Development

Professional Development helps build your potential to advance your career or personal goals. With offerings ranging from certification courses to workshops, professional development courses can sharpen your skillset or expand your knowledge, favorably increasing your career advancement opportunities and overall job satisfaction.

70%

of Employees Think Training & Development Have Aided Career Growth
Source: supplygem.com



Public Health Leadership and Management Foundations

The "Public Health Leadership and Management Foundations" course provides students with a comprehensive introduction to the essential principles and practices of leadership and management in public health and healthcare. This course will prepare students with the foundational knowledge and skills to excel in leadership roles within public health organizations and initiatives.

Students are encouraged to:

- Explore the fundamental concepts of leadership and management within public health.
- Examine various leadership theories and conduct a self-assessment of skills.
- Develop skills in strategic planning, resource allocation, and team leadership specific to public health.

Prerequisite: Participants should have a Bachelor's degree or certification in some healthcare profession and work in direct services or community health.

Tuition: \$285

March 5 - April 4

Tuesdays and Thursdays

6:00 p.m. - 7:30 p.m.

10 sessions | 15 hours

*Tuition cost includes a \$25 non-refundable registration fee.
Exam fee and course books are not included in the tuition cost.*



REMOTE

Home-Based Business: Start and Operate Your Own

This online synchronous course teaches successful business models and management practices at an organizational systems level to successfully start, operate, improve, or expand a home-based business.

Course Objectives

The content and learning activities in this course are designed to help students achieve the following objectives:

1. Effectively plan, implement, and evaluate growth strategies
2. Develop a business summary plan to implement and evaluate a practice- or system-level initiative to improve operational/practice outcomes systems using project management principles and processes
3. Analyze the cost-effectiveness of operating a home-based business
4. Analyze financial/revenue cycle management processes (IRS, Dept. of Finance)
5. Demonstrate the ability to develop and manage budgets for practice
6. Summarize strategies for risk management, including legal and regulatory compliance requirements

Upon completion of this course, students will know the business concepts, strategies, and step by step guides to start their own profitable home business.

Tuition: \$424

February 24 - April 6

Saturdays | 9 - 11 a.m. | 6 Sessions

Tuition cost includes a \$25 non-refundable registration fee. Exam fee and course books are not included in the tuition cost.



Foundations of Supply Chain Management



The Association of Supply Chain Management (ACSM), in collaboration with Tadaca Educational Solutions, LLC, has created this online program that teaches students the fundamentals of supply chain management. This program prepares individuals with prior experience for entry-level supply chain positions. It is taught by an APICS Certified Instructor.

The Modules Include:

- Foundational Knowledge in Distribution and Logistics
- Foundations in Manufacturing Management
- Foundations in Managing Operations
- Foundations in Managing Inventory
- Foundations of Operations Planning
- Introduction to Supply Chain Principles

Upon completion, participants receive a Completion Certificate and Six Badges from Tadaca Educational Solutions, LLC demonstrating their knowledge to any third party (potential employer or certification program) seeking to verify areas of knowledge.

Tuition: \$849

March 2 - June 8

Saturdays 9:00 a.m - 12:00 p.m. | 12 Sessions | 36 Hours

Tuition cost includes a \$25 non-refundable registration fee.

Exam fee and course books are not included in the tuition cost.

REMOTE

Professional Image Consulting: A Career Guidance



IN-PERSON &
REMOTE

Embrace the transformative power of image and journey toward professional success and personal improvement through the art of image consulting. **Jen Auh**, a beauty and fashion industry expert with over 20 years of experience in image and brand consulting, teaches this course. She has extensive experience working with major companies such as Macy's, Too Faced Cosmetics, and Bliss and is the founder of Style Konsult/STYiLES.

This course is designed for aspiring image consultants, seasoned consultants seeking refinement, or coaches aiming to incorporate image consulting skills into their profession. Participants will gain insights into the dynamic realm of image consulting and its profound impact on one's personal and professional image and career development.

Learning Objectives:

- **Personal Image and Brand:** Explore image consulting to build a strong personal image and brand foundation to achieve professional goals.
- **Professional Identity:** Develop an authentic and compelling personal brand to drive your career and business goals.
- **Holistic Transformation:** Identify personal image and brand requirements to experience an effective image transformation encompassing appearance, behavior, and communication.
- **All-Around Image Enhancement:** Gain practical skills through wardrobe analysis, personal shopping, and signature styling to improve personal image and style.
- **Communication Skills:** Enhance communication and interpersonal skills to build valuable, lasting, and meaningful client relationships.
- **Personal and Professional Growth:** Cultivate a mindset of continuous improvement, boosting confidence and establishing self-awareness.

Upon completion, participants will possess the knowledge and practical skills to pursue a career as an image consultant or seamlessly incorporate image consulting principles into their current professional roles.

Tuition: \$325

April 16 - May 9
Tues. & Thurs. 6 - 8 p.m.
8 sessions | 16 hours

Build Your Brand: Managing Personal Brand Identity

Empower yourself on the journey to personal and entrepreneurial success. As a unique personal image and brand consultant, **Jen Auh** has empowered countless entrepreneurs to redefine and elevate their images to achieve their business goals. This course is designed to help entrepreneurs create, strengthen, and promote their brand identity. Through practical guidance and expert insights, students will learn to develop and execute a successful strategic plan that sets their personal image and brand apart in the marketplace.

Course topics will cover the following:

- **Introduction to Personal Branding:** Gain insights into the fundamentals of personal branding and set personalized personal branding goals.
- **Crafting Your Unique Brand Story:** Identify and develop your narrative by learning storytelling techniques for maximum personal brand impact.
- **Personal Image and Brand Identity Mastery:** Establish personal image and brand guidelines to streamline communications for maximum visibility.
- **Strategic Personal Brand Planning:** Define personal image and brand positioning to ensure industry sustainability and profitability.
- **Executing a Successful Brand Marketing Plan:** Analyze case studies of successful personal brand marketing to develop strategic marketing goals.
- **Building a Holistic Online Presence:** Create and manage a professional online profile on platforms such as LinkedIn to implement online reputation management strategies across all platforms.

Upon completion, students will learn to create a personal brand narrative, build a powerful image, and increase their marketability for long-term success.

Tuition: \$325

April 22 - May 15
Mon. & Wed. 6 - 8 p.m. | 8 sessions | 16 hours

*Tuition cost includes a \$25 non-refundable registration fee.
Exam fee and course books are not included in the tuition cost.*

CPS Entrepreneurship Program (Kauffman FastTrac)

The City College
of New York



CONTINUING AND
PROFESSIONAL STUDIES

KAUFFMAN **FASTTRAC**®

The CPS Entrepreneurship Program at CCNY, in affiliation with Kauffman FastTrac, is a dynamic online course designed to create access to opportunity by placing individuals on the path to becoming entrepreneurs. Whether you are at the beginning stages of your business concept or looking to expand an existing one, the program provides a roadmap for entrepreneurial success.

Course educator and attorney William Drewes specializes in diversity and inclusion workforce development and has over 40 years of experience in business and employment law, real estate, and intellectual property. His guidance will refine your business idea, align it with your vision, and explore real market opportunities. Drewes's extended network provides guest speakers who participate as knowledgeable resources for ongoing business planning throughout the course.

The course framework comprises five (5) topics:

- **IDEATE:** Assess your entrepreneurial traits and priorities to understand how they affect your business goals
- **POSITION:** Comprehend your potential customers and competitors and how to reach them. Analyze key attributes, legal structures, and possible exit strategies.
- **COMMIT** to your business. The value of a business is realized when it generates revenue from paying customers and earns a return on investment. This information is assessed and evaluated for funding needs. Furthermore, you will learn to protect your intellectual property, business, and personal interests from legal risks.
- **REFINE** your business by applying lessons from early sales and customer feedback to future business strategies. Review financial performance regularly. Create a strong business plan to communicate goals to investors.
- **LAUNCH** your business. You will learn strategies to launch and grow your business successfully, including increasing brand awareness and developing leadership style and company culture. Reviewing best practices in process management and success metrics will allow for optimizing your business.

Tuition: \$545

April 30 - May 30

Tuesdays and Thursdays 6 - 9 p.m.

10 sessions | 30 hours

Tuition cost includes a \$25 non-refundable registration fee.

Exam fee and course books are not included in the tuition cost.



REMOTE

Microsoft Word

The word-processing course covers the basics of creating, editing, and printing documents. You will learn to save and organize documents, format paragraphs, copy and move text, spell check, set margins, tabs, and auto-correct features.

Must have basic computer knowledge and keyboarding skills. Students must have access to Broadband internet, a computer operating on Windows 10 or Mac OS (Sierra or later), Microsoft Office version 2016 or later, and a microphone.

Tuition: \$399

For more information about upcoming sessions for this course, please contact our office:

ace@ccny.cuny.edu or 212-650-7312

Microsoft PowerPoint

PowerPoint is a graphic software program created for work, school, or business presentations. Participants will learn to create slides, graphs, and on-screen slide presentations. Basic computer knowledge and computer skills (20-25 wpm) and completion of Introduction to Computers and Microsoft Word are recommended.

Students must have a Gmail account to participate in the program. Students must have access to Broadband internet, a computer operating on Windows 10 or Mac OS (Sierra or later), Microsoft Office version 2016 or later, and a microphone.

Tuition: \$399

For more information about upcoming sessions for this course, please contact our office:

ace@ccny.cuny.edu or 212-650-7312

Microsoft Excel

This course covers spreadsheet applications. Students will design functional spreadsheets by editing and formatting numerical and text data, writing formulas, and using numerical data to create charts and graphs. These are the following requirements: Students must have access to Broadband internet, a computer operating on Windows 10 or Mac OS (Sierra or later), Microsoft Office version 2016 or later, and a microphone.

Student Prerequisites: Introduction to Computers or basic working knowledge of the computer, Microsoft Word: Level 1 or equivalent. *Students must have a Gmail account to participate in the program.*

Tuition: \$399

For more information about upcoming sessions for this course, please contact our office:

ace@ccny.cuny.edu or 212-650-7312

Tuition cost includes a \$25 non-refundable registration fee. Exam fee and course books are not included in the tuition cost.



Architecture Summer Career Lab



IN-PERSON

The 4-Week Architecture Summer Career Lab, presented by The Bernard & Anne Spitzer School of Architecture at CCNY and coordinated by the Office of Continuing and Professional Studies, introduces architectural practice, theory, making, and thinking to those considering a career in the field. The course is held within a state-of-the-art facility and taught by Spitzer School faculty, alums, and graduate students. The program consists of various events and exercises that are diverse in nature, which include:

- Lectures on architectural fundamentals
- Workshops on drawing and making
- One-on-one critiques and collective pin-up reviews
- Field trips and on-site work across the city, including in City College's historic Manhattanville and Hamilton Heights neighborhoods
- Presentations from award-winning architects, historians, and designers
- Office tours
- And much more.

The curriculum will cover digital fabrication, computer-aided design, sustainable design, interdisciplinary research, and architecture as cultural discourse, emphasizing contemporary architectural thinking and practice.

The Architecture Summer Career Lab will provide full-time and in-person participants—high school, collegiate, or professional—with the experience needed to make an informed career choice, with valuable work in application portfolios for study and skills immediately applicable in future design endeavors.

Prior experience in architecture or design is not required for pre-college or college-level programming. Admission is on a rolling basis. All attending students will receive a small kit, including essential tools and materials for drawing, modeling, and more.

To learn more about The Bernard and Anne Spitzer School of Architecture, visit ssa.cuny.cuny.edu.

For additional information on the Summer Career Lab in Architecture, including details on tuition and application forms, please contact us at ace@ccny.cuny.edu.

Students must be sixteen years of age by the program's start date to enroll in pre-college courses. Students enrolling in college-level courses must be eighteen years or older by the program's start date or have completed one year of college study.

Tuition: \$2,525

July 8 - August 2

Monday - Friday 9:30 a.m - 6:00 p.m.

25 sessions

Tuition cost includes a \$25 non-refundable registration fee.

Exam fee and course books are not included in the tuition cost.

Security Guard Certification

The City College of New York, a NYS DCJS-approved Security Guard Training School, offers NYS-mandated security training courses. All courses are taught by certified instructors.
Prerequisite: Participants must be 18 years of age or older.

8-Hour Pre-Assignment Training for Security Guards

This 8-hour course is the first step in obtaining a security guard registration card from the New York State Department of State. The course curriculum provides students with a general overview of the duties and responsibilities of a security guard. Topics covered in this course include the role of the security guard, legal powers and limitations, emergencies, communications and public relations, access control, and ethics and conduct. The passing of an examination is required for the successful completion of this course.

Tuition: \$99

April 12

9:00 a.m. - 5:00 p.m. | 1 Session

16-Hour On-the-Job Training for Security Guards

This is a 16-hour course that must be completed within 90 days of employment as a security guard. The course gives students a thorough overview of a security guard's duties and responsibilities. Topics covered in this course include the role of the security guard, legal powers and limitations, emergencies, communications and public relations, access control, ethics and conduct, incident command system, and terrorism. The passing of an examination is required for the successful completion of this course.

Tuition: \$175

April 12 - April 13

9:00 a.m. - 5:00 p.m. | 2 Sessions

8-Hour Annual In-Service for Security Guards

The CCNY Security Guard Training School provides this 8-hour course for security guards to maintain and renew their security guard registration cards. Security guards must complete two (2) annual in-service courses within their two-year registration period.

The course is structured to provide students with updated and enhanced information on the duties and responsibilities of a security guard. This course comprises eight hours of instruction, and includes two hours of security-related elective topics.

Tuition: \$99


April 19

9:00 a.m. - 5:00 p.m. | 1 Session



IN-PERSON

GIS Fundamentals of Geographical Information Systems (GIS): Level 1



Explore the world of spatial analysis and cartography with geographic information systems (GIS). In this class students will learn the basics of the industry's leading software tool, ArcGIS, during four week-long modules:

- Week 1: Learn how GIS grew from paper maps to the globally integrated electronic software packages of today. You will install ArcGIS on your computer and learn how to use online help to answer technical questions.
- Week 2: Open up ArcGIS and explore data using ArcMap. Learn the foundational concepts of GIS, how to analyze data, and make your first map.
- Week 3: Make your own maps! Symbolize data and create an eye-catching final product.
- Week 4: Share your data and maps and learn to store and organize your data.
- Week 5: Tour ArcToolbox and learn how to use common geospatial analysis tools built into ArcGIS
- Week 6: Gain a working understanding of raster data models: symbolize, reproject, overlay, and assess rasters. Take a detour into 3D data models, and interpolation of observations into 3D surfaces and rasters

Students who need an ArcGIS license will receive a non-commercial, 1 year student license for participation in this course and specialization. For second year onward they can get a license from ESRI at \$100/yr.

Tuition: TBD **Upcoming Dates for Spring 2024** coming soon.

GIS Data Formats, Design and Quality: Level 2

Apply your GIS knowledge in this course on geospatial analysis, focusing on analysis tools, 3D data, working with rasters, projections, and environment variables. Through all four weeks of this course, we'll work through a project together - something unique to this course - from project conception, through data retrieval, initial data management and processing, and finally to our analysis products. In this class you will learn the fundamentals of geospatial and environmental analysis during four week-long modules:

- Week 1: Tour ArcToolbox and learn how to use common geospatial analysis tools built into ArcGIS
- Week 2: Gain a working understanding of raster data models: symbolize, reproject, overlay, and assess rasters. Take a detour into 3D data models, and interpolation of observations into 3D surfaces and rasters
- Week 3: Go in-depth on projections and coordinate systems, which are foundational to all GIS. Learn how to use environment variables to constrain your analyses and get better quality data products.
- Week 4: Expand your knowledge of symbology. Learn how to visually display your data by classifying it in logical groupings and then symbolizing it on your map.

Take Geospatial and Environmental Analysis as a standalone course or as part of the Geographic Information Systems (GIS) Specialization. You should have equivalent experience to completing the first and second courses in this specialization, "Fundamentals of GIS" and "GIS Data Formats, Design, and Quality", before taking this course. By completing this third class in the Specialization you will gain the skills needed to succeed in the full program.

Tuition: **Upcoming Dates for Spring 2024** coming soon.

*Tuition cost includes a \$25 non-refundable registration fee.
Exam fee and course books are not included in the tuition cost.*

IN-PERSON

Teaching Assistant Workshops

CCNY is a NYS-Approved Training Provider. NYS requires the workshops offered for individuals applying for educator certification in NYS or educators who must meet NYS requirements to receive accreditation and registration with NYS.



Dignity for All Students Act (DASA)

The City College of New York is a NYS-Approved Provider of Coursework and Training in Harassment, Bullying, and Discrimination Prevention and Intervention as authorized under the Dignity for All Students Act (DASA). Individuals taking the DASA training will receive certification and registration with NYS. This training workshop is required for individuals applying for educator certification in NYS; it covers components of development and awareness of student populations, student achievement, and behavior.

Tuition: \$165

For more information about upcoming sessions for this course, please contact our office:
ace@ccny.cuny.edu or 212-650-7312

Identification and Reporting of Child Abuse and Maltreatment

There is excellent value in professionals coming together to network and meet face-to-face with an instructor. This 2-hour workshop meets the New York State requirement for identifying and reporting child abuse. Individuals will learn to recognize incidents of physical abuse, child neglect/maltreatment, and sexual abuse.

Tuition: \$74

For more information about upcoming sessions for this course, please contact our office:
ace@ccny.cuny.edu or 212-650-7312

School Violence Prevention and Intervention Training

The City College of New York is an approved Provider of Coursework for all teachers to complete certification under the supervision of an instructor. This 2-hour workshop includes school codes of conduct and prevention intervention strategies. Individuals who complete the training will receive a certificate and registration with NYS.

Tuition: \$74

For more information about upcoming sessions for this course, please contact our office:
ace@ccny.cuny.edu or 212-650-7312

*Tuition cost includes a \$25 non-refundable registration fee.
Exam fee and course books are not included in the tuition cost.*

REMOTE

Personal Development

Personal development courses offer opportunities to learn new skills, broaden horizons, and expand social networks. Pursuing personal growth and enrichment is a lifelong journey of self-discovery and constant learning that uncovers hidden talents and explores new interests.



Escribir Poesía en Español I / Writing Poetry in Spanish I

Este seminario-taller busca liberar la expresión de la creatividad a través del uso de la poesía en español. Se responde a una serie de preguntas: ¿Cuáles son las formas de la poesía? ¿Cuál es la relación entre el contenido y la forma? ¿Cuáles han sido las diferentes formas que ha asumido la poesía a través de la historia de occidente? ¿Cuáles son las posibles clasificaciones y qué valor tienen para el poeta? Entre las formas a discutir están: soneto, romance, villancico, silva, zéjel, canción, madrigal, letrilla, jarchas, coplas, la anti-poesía, etc.

Cada participante desarrollará un portafolio de 10 a 12 poemas para publicación o envío a concursos.

This seminar-workshop seeks to liberate creative expression through the use of poetry in the Spanish language. It addresses a series of questions: What are the forms of poetry? What is the relationship between content and form? What have been the different forms that poetry has taken throughout the history of the Western world? What are the possible classifications, and what value do they hold for the poet? And more. Among the forms to be discussed are sonnet, romance, villancico, silva, zéjel, song, madrigal, letrilla, jarchas, coplas, anti-poetry, etc.

Each participant will develop a portfolio of 10 to 12 poems for publication or submission to contests.

Matrícula / Tuition: \$300

Enero / January 31 - Mayo / May 22

Miércoles / Wednesdays, 6 - 8 p.m. | 15 Sesiones / Sessions

Tuition cost includes a \$25 non-refundable registration fee.

Exam fee and course books are not included in the tuition cost.



REMOTE

Information Technology

The U.S. Bureau of Labor Statistics predicts that employment growth in computer and information technology jobs will grow much faster than the average for all occupations. Workers in these occupations create, maintain, or support computer applications, systems, and networks.

BLS projects an estimated 377,500 job opportunities from 2022 to 2032 yearly over the decade.



CompTIA A+

This course covers building, fixing, and troubleshooting computers and simple networking concepts. After completing the course, students can take both CompTIA 1101 and 1102 exams.

Successful candidates will have the knowledge required to:

- Assemble components based on customer requirements, install, configure, and maintain PCs, mobile devices, and software
- Understand the basics of networking and security forensics
- Properly diagnose and resolve standard hardware and software issues
- Apply troubleshooting skills
- Provide appropriate customer support
- Understand scripting, virtualization, desktop imaging, and deployment

Tuition: \$727 April 15 - June 17
Mondays & Wednesdays 7-10 p.m. | 18 Sessions

CompTIA Network+

The CompTIA Network+ certification exam will verify that the successful candidate has the skills to implement enterprise-level wired and wireless network solutions, identify and troubleshoot network performance issues, and harden networks against threats to mitigate security vulnerabilities.

The major areas of emphasis include:

- IP addressing and connecting networks
- Wireless standards and technologies
- Network availability
- Securing and hardening networks

Tuition: \$727 April 9 - June 18
Mondays & Tuesdays 6-9 p.m. | 18 Sessions

Tuition cost includes a \$25 non-refundable registration fee. Exam fee and course books are not included in the tuition cost.

REMOTE

CISCO CyberOps

The CISCO CyberOps Certification course focuses on securing digital assets, protecting data, and learning the skills and knowledge earned in the training programs that can prepare you for a career in cybersecurity. Organizations everywhere are building robust security teams to address cyber threats, and they need qualified professionals they can trust to lead those teams and make the policies and systems that will protect their data. Now is the time to grow your skills, get certified, and join the next generation of security professionals in building a safer data environment.

The CyberOps Certification explores cyber trends and threats, staying safe in cyberspace, and protecting personal and company data. It will also cover foundational knowledge and essential skills for all cybersecurity domains, including information security, systems security, network security, ethics and laws, and defense and mitigation techniques used to protect businesses.

Three (3) mandatory courses to cover the entire curriculum:

- Course 1: Introduction to Cybersecurity
- Course 2: Cybersecurity Essentials
- Course 3: CyberOps Associate

Tuition: \$1,815

January 29 - May 6

Mondays & Wednesdays 6 - 9 p.m. | 34 Sessions | 116 Hours

CISCO Certified Network Associate (CCNA)

The CISCO Certified Network Associate Certification course introduces cybersecurity operations concepts while emphasizing the practical application of skills needed to monitor, detect, analyze, and respond to security threats. It also introduces core security concepts and skills required to troubleshoot and monitor computer networks and ensure the integrity of devices and data. The course also emphasizes the practical application of skills to design, implement, and manage network security systems.

The explosive growth of connected (IoT) devices enables the digitization of industries and increases exposure to security threats. Students learn to perform vulnerability and risk assessments, research, and recommend risk mitigation strategies for common security threats in IoT systems.

Three (3) mandatory courses to cover the entire curriculum:

- Course 1: CCNA: Introduction to Networks
- Course 2: CCNA: Switching, Routing, and Wireless Essentials
- Course 3: CCNA: Enterprise Networking, Security, and Automation

Tuition: \$2,538

March 18 - July 23

Mon/Tues/Wed 6 - 10 p.m. | 53 Sessions | 210 Hours

Tuition cost includes a \$25 non-refundable registration fee.

Exam fee and course books are not included in the tuition cost.

IN-PERSON



Where Potential Meets Opportunity

More than 12.7 million students have found their potential through Networking Academy.

CCNY
CONTINUING AND
PROFESSIONAL
STUDIES



**Networking
Academy
Partner**



Google IT Support Professional

Grow with Google

The City College
of New York



CONTINUING AND
PROFESSIONAL STUDIES

REMOTE

The Google IT Support Certificate is a hands-on, online program designed to prepare beginner learners for entry-level jobs in IT support upon completion of the certificate. Google developed the program and covers the fundamentals of IT support, including troubleshooting, customer service, networking, operating systems, system administration, and security. Classes will be held online via Google Classroom. Students will interact with a Google-certified instructor as they navigate through the course modules and sections. Students will receive a Google-approved City College certificate upon completing the program.

Businesses, nonprofits, school systems, and government organizations rely on technology. Computers break, systems fail, and phones die – when that happens, we need experts to fix them. IT support is all about troubleshooting and problem solving when the tech fails and providing excellent customer service. This includes setting up computers for users within an organization, overseeing computer systems, and debugging software whenever a problem arises. A job in IT can suggest in-person or remote help-desk work in a range of organizations across many different industries.

Prepare for an entry-level role in IT support by earning the Google IT Support Professional Certificate.

Experience is not required to get started—beginner level; no prerequisites.

- Launch your IT career with a program designed to take you from beginner to job-ready in under six months
- Complete interactive, hands-on projects to help you ace job interviews
- Master the skills necessary to succeed in an entry-level role in IT support

Tuition: \$1,500

March 4 - June 26

Mondays and Wednesdays 5:30-8:30 p.m. | 34 Sessions | 102 Hours

AI and Machine Learning: Beginner Edition

The Machine Learning Specialization is a 3-course Series, a fundamental online program developed in collaboration between DeepLearning.AI and Stanford Online. This Specialization is taught by Andrew Ng, an AI visionary who has led critical research at Stanford University and groundbreaking work at Google Brain, Baidu, and Landing.AI to advance the AI field.

The 3-course Series is an updated and expanded version of Andrew's pioneering Machine Learning course, *rated 4.9 out of 5 and taken by over 4.8 million learners* since it launched in 2012. It provides a broad introduction to modern machine learning, including supervised learning (*multiple linear regression, logistic regression, neural networks, and decision trees*), unsupervised learning (*clustering, dimensionality reduction, recommender systems*), and some of the best practices used in Silicon Valley for artificial intelligence and machine learning innovation (*evaluating and tuning models, taking a data-centric approach to improving performance, and more.*) After completing the first course, the program will consist of 45 hours of lectures, labs, and 12 career-related workshops.

This beginner-friendly course is the first in the 3-course Series of the Specialization program. It will teach you the fundamentals of machine learning and how to apply them to build AI applications for practical use.

In the first course of the Machine Learning Specialization, you will learn to:

- Build machine learning models in Python using popular machine learning libraries, NumPy and scikit-learn
- Build and train supervised machine learning models for prediction and binary classification tasks, including linear regression and logistic regression

After completing this Specialization program, you will have mastered key machine learning concepts and gained practical knowledge to apply them effectively to challenging real-world scenarios.

If you want to explore or pursue a career in data science, AI, or machine learning, the new Machine Learning Specialization Program is an excellent place to start!

Tuition: \$1,275*

March 5 - April 9

Tuesdays and Thursdays 6 - 9 p.m. | 11 Sessions | 33 Hours

For more information about this course,

please contact our office: ace@ccny.cuny.edu or 212-650-7312

Tuition cost includes a \$25 non-refundable registration fee.

Exam fee and course books are not included in the tuition cost.



REMOTE

Environmental Sustainability and Construction Safety



Green Jobs Energy Training Program

The City College
of New York



CONTINUING AND
PROFESSIONAL STUDIES



BUILDING
performance
LAB

Through the lens of 'Building Science,' this course introduces students to energy use and conservation in buildings, providing them with knowledge and skills to reduce carbon dioxide emissions and the climate changes they cause. Buildings/Facilities rely on various energy systems, such as heating, ventilation, cooling, and lighting, to ensure their occupants' safety, health, and comfort. In addition to exploring how to improve energy efficiency in these areas of utilization, students will learn how the type, source, and transport of energy also impact carbon dioxide emissions.

The course will cover and explain the energy-using systems and components in plain language, including their names, functions, and opportunities for performance improvements, making it accessible to newcomers in building performance industries. This course is comprised of 12 classroom sessions and 3 'lab' sessions for a total of 15 sessions.

Course topics covered:

- Building Science and Energy Efficiency
- Indoor Environmental Quality and Human Comfort
- Low-energy Design for Retrofit & Construction
- Electrification & Energy Storage
- Building Automation

Prerequisites: High School Level Algebra & Geometry

Required Textbook: Students will receive the *Residential Energy: Cost Savings and Comfort for Existing Buildings* textbook by John Krigger at no cost.

Required Materials: Students will require internet access and a laptop or tablet. All other program materials are provided at no cost.

Tuition: \$300

For more information about upcoming sessions for this course, please contact our office: ace@ccny.cuny.edu or 212-650-7312

**GUARANTEED PAID
APPRENTICESHIP**

Tuition cost includes a \$25 non-refundable registration fee. Exam fee and course books are not included in the tuition cost.

IN-PERSON



Green Professional Training (GPRO) Series

GPRO Fundamentals of Building Green

Buildings have a significant impact on the world around us. Compared to conventional buildings, high-performance buildings emit less carbon, reduce our environmental footprint, and improve our well-being. In GPRO Fundamentals, you'll discover the connections between building systems and the foundational strategies for making them more sustainable. Whether you want to make changes to your building or are starting a career in the building industry, you'll walk away with a new understanding of the built environment and the incredible difference that small changes can make. GPRO Fundamentals is a 4-6 hour training taught live, in-person or remotely, by a highly knowledgeable instructor with industry experience. You are encouraged to ask questions and participate in classroom discussions and activities. After completing the training, you can earn a GPRO Fundamentals Certificate by passing a 25-question multiple-choice exam. GPRO Fundamentals qualifies for 4 AIA and GBCI Credits.

By the end of this training, you'll be able to:

- Explain the relationship between buildings and climate change
- Understand the basic elements of high-performance construction and building operations
- Describe the role of trades on high-performance job sites
- Describe energy-consuming building systems and a high-level overview of the strategies to reduce building energy use

Tuition: \$250

February 14

Wednesday

5 - 10 p.m. | 1 Session

March 2

Saturday

9 a.m. - 2 p.m. | 1 Session

April 15

Monday

9 a.m. - 2 p.m. | 1 Session

May 15

Wednesday

5-10 p.m. | 1 Session

Who is this course for?

This training is ideal for anyone who needs a better understanding of high-performance building, including:

- Sales or administrative staff who work in real estate, construction, architecture or engineering
- Workforce development providers
- Facilities and operations staff
- Students interested in entering the building or construction industry

12-Hour GPRO Operations and Maintenance

Building design and construction get a lot of attention. Still, the majority of energy that a building uses over its lifetime comes down to how it is operated and maintained. In GPRO Operations and Maintenance, you'll learn how to execute the best practices of sustainable building operations and leave with an individualized action plan. You'll learn valuable tools to measure building performance and straightforward strategies to reduce energy consumption and costs. GPRO Operations and Maintenance is a 12-hour training taught live, in-person, or remotely by a highly knowledgeable instructor with industry experience. You are encouraged to ask questions and participate in classroom discussions and activities. After completing the training, you can earn a GPRO O&M Certificate by passing a 50-question multiple-choice exam. Additionally, you'll gain access to short, on-demand bonus courses on topics such as financing energy projects, interpreting energy audits, NYC Local Law 97, and more. GPRO O&M qualifies for 12 AIA, GBCI, and PDH Credits.

Please note: GPRO Fundamentals of Building Green is integrated into this course, so you do not need to take both classes separately.

By the end of this training, you'll be able to:

- Take a systemic approach to operating and maintaining a building
- Evaluate building performance
- Describe three immediately actionable next steps needed to improve the health and efficiency of your building.
- Explain the costs and benefits of efficiency measures.

Tuition: \$400

February 21 - 23

Wednesday - Friday

5 - 9 p.m. | 3 Sessions

March 9 & 16

Saturdays

9 a.m. - 5 p.m. | 2 Sessions

April 16 & 17

Tuesday and Wednesday

9 a.m. - 5 p.m. | 2 Sessions

May 22 - 24

Wednesday - Friday

5 - 9 p.m. | 3 Sessions

Who is this course for?

This training is ideal for property managers and building staff involved in the operations and maintenance of both residential and commercial buildings, including:

- Building superintendents and operators
- Facility and property managers
- Operating and stationary engineers
- Porters
- Handy people

8-Hour GPRO Construction Management

Low-carbon, energy-efficient construction will be critical in complying with building codes and achieving ambitious climate goals. These projects require understanding new technologies, implementing new processes, and improving coordination across disciplines. GPRO CM provides students with best practices for sustainability and actionable strategies for every construction phase. Learn how to avoid common construction mistakes and leave the training with practical steps to manage successful, sustainable, and cost-effective projects. GPRO CM is an 8-hour training taught live, in-person, or remotely by a highly knowledgeable instructor with industry experience. You are encouraged to ask questions and participate in classroom discussions and activities. After completing the training, you can earn a GPRO CM certificate by passing a 30-question multiple-choice exam. Additionally, you'll gain access to short, on-demand bonus courses on topics like construction waste management, energy code inspections, systems commissioning, and more. GPRO CM qualifies for 7 AIA, GBCI, and PDH credits. This training qualifies under LEED Pilot Credit 81, which allows projects to achieve a LEED point by training personnel on the project team.

By the end of this training, you'll be able to:

- Explain the key coordination issues and documentation requirements unique to high-performance construction at each project stage.
- Describe the construction manager's and project team's responsibilities to ensure building performance.
- Implement sustainable construction processes and communicate required information to subcontractors and trades.
- Coordinate testing, inspection, and commissioning activities to ensure intended performance.

Tuition: \$300

February 26 & 28

Monday and Wednesday

5 - 9 p.m. | 2 Sessions

March 23

Saturday

9 a.m. - 5 p.m. | 1 Session

April 18 & 19

Thursday and Friday

9 a.m. - 1 p.m. | 2 Sessions

May 28 & 30

Tuesday and Thursday

5 - 9 p.m. | 2 Sessions

Who is this course for?

This training is ideal for a range of construction professionals, including:

- Construction managers and general contractors
- Experienced tradespersons and trade forepersons
- Owner's representatives
- Project managers and site superintendents
- Estimators and other office personnel
- Students and apprentices in construction fields

Tuition cost includes a \$25 non-refundable registration fee. Exam fee and course books are not included in the tuition cost.

Rangel Infrastructure Workforce Initiative



40-Hour Hazwoper Certification

The Hazardous Waste Operations and Emergency Response Standard (HAZWOPER) applies to employers and employees potentially exposed to hazardous substances during various operations, including clean-up, corrective actions, and emergency response. The 40-Hour HAZWOPER training is the most important certification for an environmental technician career in Brownfields remediation and environmental consulting.

Tuition: \$875

February 5 - 16 Monday - Friday 5 - 9 p.m. 10 Sessions	March 2 - 30 Saturdays 9 a.m. - 5 p.m. 5 Sessions	April 8 - 12 Monday - Friday 9 a.m. - 5 p.m. 5 Sessions
--	---	---

30-Hour OSHA Construction Training

OSHA-authorized trainers deliver the 30-Hour Outreach Training Program for the construction industry. The training provides workers and supervisors with an overview of OSHA Safety Standard Requirements and the recognition, avoidance, abatement, and prevention of health hazards at construction worksites. It also covers workers' rights, employer responsibilities, and how to file a complaint. The 30-hour training is DOB-approved and best serves site supervisors or workers with some safety responsibilities.

Tuition: \$450

February 6 - 22 Tuesdays and Thursdays 5 - 10 p.m. 6 Sessions	March 2 - 23 Saturdays 9 a.m. - 5 p.m. 4 Sessions	April 1 - 4 Monday - Thursday 9 a.m. - 5 p.m. 4 Sessions
---	---	--

10-Hour NYC DOB Site Safety Training (SST)

Local Law 196 of 2017 requires that construction and demolition workers on job sites with a Construction Superintendent, Site Safety Coordinator, or Site Safety Manager must have 40 hours of training. Participants who have completed their 30-hour OSHA Construction training may enroll in this 10-hour course that leads to awarding a Site Safety Training (SST) Card. For more information on this training, visit the NYC Department of Buildings (DOB) at <https://www1.nyc.gov/site/buildings/safety/sst-worker-information.page>.

Tuition: \$250

February 27 & 29 Tuesday and Thursday 5 - 10 p.m. 2 Sessions	March 24 Sunday 8 a.m. - 6 p.m. 1 Session	April 5 Friday 8 a.m. - 6 p.m. 1 Session	May 28 & 30 Tuesday and Thursday 5 - 10 p.m. 2 Sessions
--	---	--	---

4-Hour Flagger Training - NYSDOT

This 4-Hour Flagger training provides a comprehensive course in work zone safety and traffic control strategies, meeting the NYS Department of Transportation Regulations and Standard Specifications under Section 619-3L1 for Work Zone Traffic Control. This course provides workers with the techniques to safely direct and control traffic around construction activities. Students will learn about The National Manual on Uniform Traffic Control Devices (MUTCD) and the NYS Supplement, which sets forth the basic principles governing NYS's design, use, installation, and operation of traffic control devices.

Tuition: \$125

February 1 Thursday 6 - 10 p.m. 1 Session	March 30 Saturday 8 a.m. - 5 p.m. 1 Session	April 23 Tuesday 9 a.m. - 1 p.m. 1 Session	May 2 Thursday 6 - 10 p.m. 1 Session
---	---	--	--

4-Hour Supported Scaffold User

This 4-hour training is a DOB-approved SST course for NYC construction workers using supported scaffolding.

The course explains safe work practices for supported scaffold systems. The course prepares workers to recognize and avoid various safety hazards associated with supported scaffold use. It includes essential topics such as safety controls, fall prevention equipment, inspections, emergency planning, OSHA 1926 regulations, and NYC Construction Codes that help to reduce the risk of accidents involving supported scaffolds.

Tuition: \$150

February 2 Friday 6 - 10 p.m. 1 Session	March 30 Saturday 1 p.m. - 5 p.m. 1 Session	April 25 Thursday 9 a.m. - 1 p.m. 1 Session	May 2 Thursday 6 - 10 p.m. 1 Session
---	---	---	--

Tuition cost includes a \$25 non-refundable registration fee.

Exam fee and course books are not included in the tuition cost.

The City College
of New York



CONTINUING AND
PROFESSIONAL STUDIES

CHARLES B. RANGEL
INFRASTRUCTURE
WORKFORCE INITIATIVE
The City College of New York

IN-PERSON

Ed2Go

Online Education
Delivering Expert-developed
Career Courses and Programs



The Office of Continuing and Professional Studies at CCNY, in partnership with Ed2Go, offers expert-developed online programs that provide in-demand skills to advance your career and on the path to success. Career training courses and programs have open enrollment, allowing students to start anytime. They have 18 months of access and can learn at their convenience. Each program is assigned an advisement team to support students throughout their academic journey. Students also have the option to enroll in instructor-led courses. These courses offer real-time learning opportunities and interactive sessions with other students over a six-week schedule. For students who are independent learners, the self-paced courses provided access to all lessons immediately with up to three months to complete. Instructors and mentors actively participate in their online learning experience and respond to questions or concerns to encourage and motivate students to succeed.

Over 300 online courses under the categories listed below. Choose a course and get started today!

- Business and Professional
- IT and Software Development
- Management and Corporate
- Media and Design
- College Readiness
- Computer Applications
- Hospitality and Service Industry
- Language
- Online Human Resources Training
- Writing
- Computer Programming
- Skilled Trades and Industrial
- Software Development
- Sustainable Energy and Going Green
- Education
- Construction and Trades
- Healthcare and Fitness
- Interactive Poetry Workshop
- Legal

To register visit: <https://careertraining.ed2go.com/ccny>

For more information or assistance with registration, email us at ace@ccny.cuny.edu or call us at (212) 650-7312.

Travel Directions

By Train

#1 local to 137th Street and Broadway. Walk east on 138th Street to Convent Avenue.

“A” or “D” EXPRESS, or the “B” or “C” LOCAL to 145th Street and St. Nicholas Avenue. Walk west one block to 145th Street and Convent Avenue, then south to 138th Street.
#4 or #5 EXPRESS or #6 LOCAL to 125th Street and Lexington Avenue. Change there for the M-100 or M-101 bus to Amsterdam Avenue and 138th Street. Walk east one block to Convent Avenue.

METRO-NORTH to 125th Street and Park Avenue. Change there for the M-100 or M-101 bus to Amsterdam Avenue and 138th Street. Walk east one block to Convent Avenue

Shuttle Bus

Note: City College operates shuttle buses between the campus and the 125th Street and 145th Street (St. Nicholas Avenue) subway stations.

By Car

FROM THE WESTSIDE HIGHWAY TRAVELING NORTH OR SOUTH:

Exit at 125th Street, cross Broadway, one block; left on to Amsterdam Avenue; right on to 133rd Street one block; left on to Convent Avenue.

FROM THE EAST SIDE: From the FDR or the RFK Bridge to Harlem River Drive, exit at 135th Street to end, turn right on St. Nicholas Avenue, then left on to 141st Street, make left on Convent Avenue to campus.

By Bus

M-4 or M-5 to Broadway and 137th Street. Walk east three blocks on 138th Street to Convent Avenue.

M-100 or M-101 to Amsterdam Avenue and 138th Street. Walk east one block to Convent Avenue

Campus Map



The City College
of New York

- 1 Shepard Hall
- 2 Steinman Hall - The Grove School of Engineering
- 3 Baskerville Hall
- 4 Compton-Goethals Hall
- 5 Townsend Harris Hall
- 6 Wingate Hall
- 7 North Academic Center
- 8 Marshak Science Center
- 9 Wille Administration Building
- 10 Spitzer Hall - The Spitzer School of Architecture
- 11 Aaron Davis Hall
- 12 Schiff House - Child Development Center
- 13 The Towers
- 14 City College Center for Discovery & Innovation
- 15 CUNY Advance Science Research Center



The C
of Ne



CCNY Shuttle Bus

Shuttle will pick up + drop off at the location. Shuttle runs between W125, W145 and Marshak.



Handicapped Access

Access to Nat Holman Gym and Rooms 20 thru 28 only.

The City College
of New York



CONTINUING AND PROFESSIONAL STUDIES



**CU
NY** THE GREATEST
URBAN UNIVERSITY
IN THE WORLD