

LEONARD DAVIS CENTER

FOR THE PERFORMING ARTS

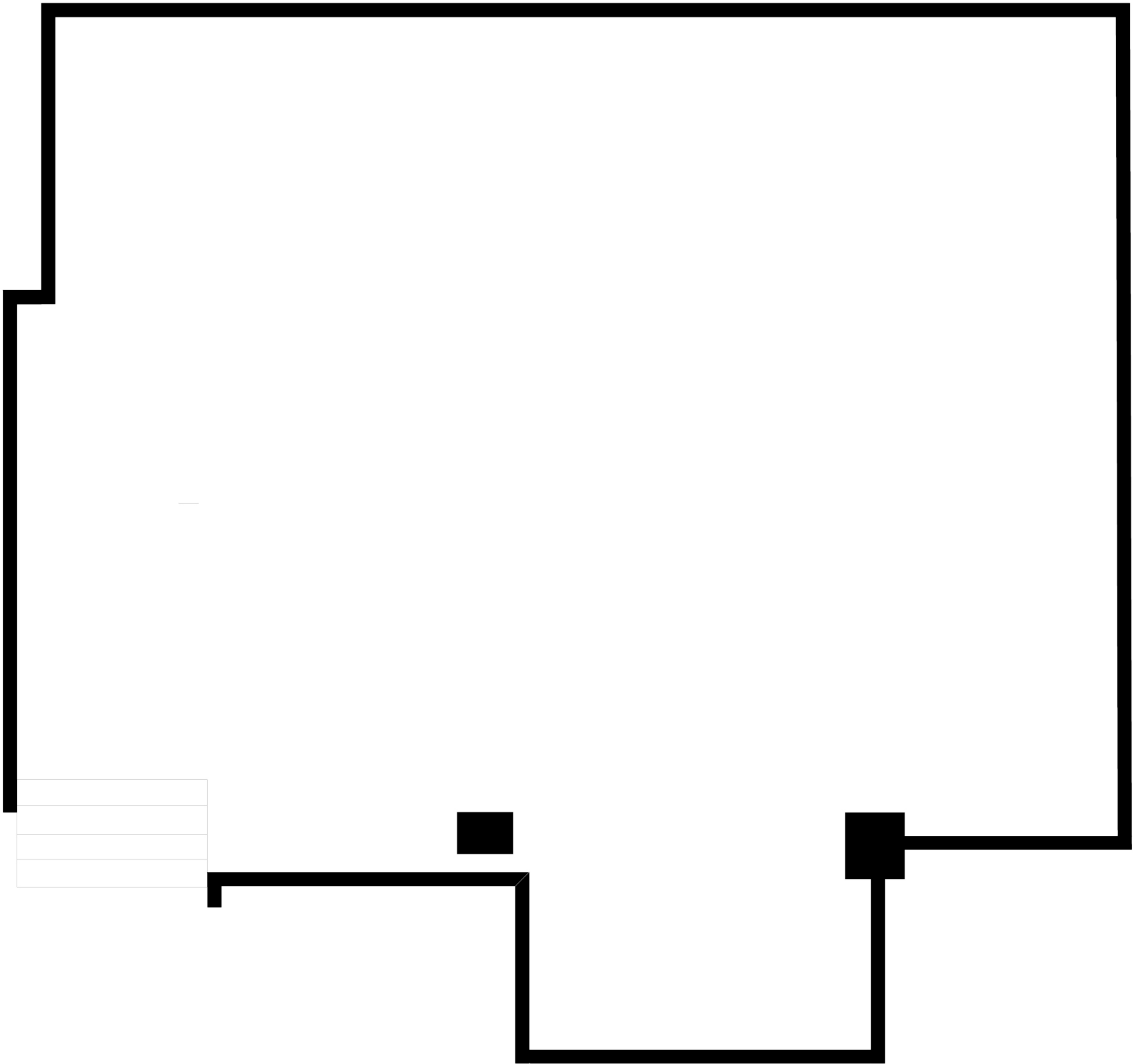
AARON DAVIS HALL

THEATRE C

Technical Specifications

Capacity	149
Space	1382 sq.ft.

Space Layout



LEONARD DAVIS CENTER

FOR THE PERFORMING ARTS

Power and Lighting

This space is equipped with several grounded outlets for your power needs.

- General lighting: Fluorescent tubes
- Speciality lighting (available upon request): Altman 3" Fixtures

Audio

Theatre C provides the following audio equipment:

- Bose S1 Pro Portable Bluetooth Speaker System

Loading Dock

The loading dock for Theatre C is located on the south side of Aaron Davis Hall. The entrance is on 133rd Street and Convent Avenue. The loading dock is attached to the scene shop and you will be required to carry any items you have down stairs.

Dressing Rooms

There are no dressing rooms or lavatory facilities on stage level. Not all dressing rooms listed here are available for every event; rooms will be assigned at the discretion of the Performing Arts Technical Manager.

- 2 rooms for up to 25 people each (shared restroom)
- 4 rooms for 1-2 people (shared restroom)-Available at an additional cost
- 1 room for up to 20 people (shared restroom) -Available at an additional cost